

# WL-TC20B

HD-TVI



## 2.0 MEGAPIXEL HD-TVI/AHD/CVBS/HD-CVI IR BULLET SECURITY CAMERA

### 65' SMART IR RANGE

- + 2.0 MP 1/2.7" CMOS Sensor
- + 1080P@25, 1080P@30
- + 4-in-one HD-TVI, AHD, HD-CVI, CVBS Selectable Output (LEFT:CVBS, RIGHT:AHD, DOWN:HD-TVI, UP:HD-CVI)
- + 3.6 mm wide angle 80° FOV lens
- + 65' smart IR range
- + ICR filter
- + IP66, operating temperature of 14°F ~ 122°F

### WHAT'S INCLUDED:

- + (1) 2.0 MP HD-TVI/AHD/CVBS/HD-CVI IR bullet Security Camera
- + (1) Mounting bracket
- + (1) Quick start guide



### PROTECTION AND WARRANTY

All Supercircuits purchases are protected by a 30-day money-back guarantee, unlimited US-based technical support, and our 3-year warranty covers your entire purchase, with no asterisks and no exceptions.

Enjoy the flexibility of selecting your outputs and field of view with this 2.0 Megapixel HD-TVI/AHD/CVBS/HD-CVI IR Bullet Security Camera.

The camera's 1/2.7" CMOS sensor delivers 1080p resolution video @ 30 fps and 1000 TVL CVBS, providing you with the surveillance details you need.

This camera's low Lux rating offers color, auto, and black and white images for low-light applications. This camera has a 0.0 Lux rating with IR on.

You can select from a wide range of compatibility with the camera's selectable output that include HD-TVI, AHD, HD-CVI, and CVBS.

UTC Control allows you access to the camera's built-in OSD controls, as well as to position the camera with a joystick, removing installation hassle by giving you the ability to adjust the camera remotely.

This compact bullet camera is IP66 rated and has an operating temperature of 14°F ~ 122°F, which makes it a great outdoor solution.

This product is protected by a 30-day money-back guarantee and a manufacturer's 3-Year Warranty. If you have an issue, we provide unlimited technical support – and manage all returns and exchanges directly, minimizing unnecessary downtime.

# SPECIFICATIONS

## IMAGING SPECIFICATIONS

Imager Type	Progressive Scan CMOS
Imager Size (in)	1/2.7
Color	Yes
Camera Resolution (px)	1080P/ 960H
Megapixel	2.0
Day/Night Function	True D/N w/Mechanical Cut Filter
Digital Noise Reduction (DNR)	Yes
Dynamic Range (dB)	50
Effective Pixels	1920(H) × 1080(V)
IR Array Range (ft)	65
Lux (B/W)	0.0 (IR ON)
Max Analog IPS (NTSC)	30
OSD	Yes
AGC Control	Auto
Wide Dynamic	Yes

## LENS SPECIFICATIONS

FOV (degrees)	80
Focus	Fixed
Lens Included	Yes
Lens Type	Fixed
Focal Length (mm)	3.6

## PHYSICAL CHARACTERISTICS

Dimensions	7.3" x 2.9" x 2.7"
Construction	Metal
Operating Temperature (F)	14°F - 122°F
Product Color	White
Outdoor	Yes
Ingress Protection	IP66
Weight (lb)	1.1

## POWER REQUIREMENTS

Power Supply Included	No
Power (w)	DC12V±10%, 600mA

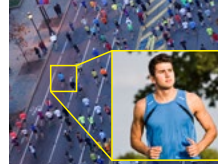
## CONNECTORS

Video Output	BNC
--------------	-----

# KEY FEATURES

## MEGAPIXEL RESOLUTION

Captures more pixel provides forensic-level detail.



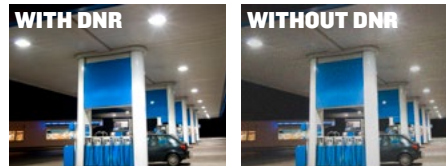
## WIDE DYNAMIC RANGE (WDR)

Takes & combines multiple images for the best balanced image.



## DIGITAL NOISE REDUCTION (DNR)

Reduces image noise in low light conditions.



## IP66 WEATHER RATED ENCLOSURE

Protects interior components from dust and rain ingress.

