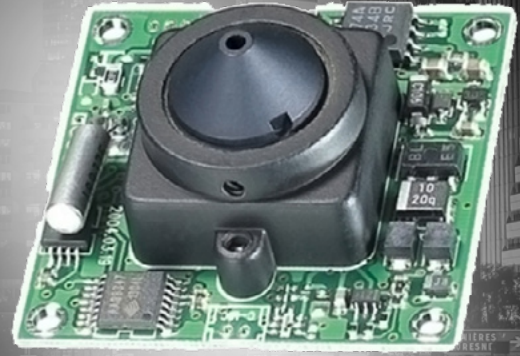


MDI080C



HD-TVI

AHD

HD-CVI

CVBS

2.43 MEGAPIXEL HD-TVI/AHD/CVBS/HD-CVI BOARD SECURITY CAMERA WITH CONE PINHOLE LENS

COMPACT CAMERA WITH CONE PINHOLE LENS THAT SEE THROUGH SMALLER OPENINGS

- + 2.43 MP Sony Exmor CMOS Sensor
- + 1080P @ 30FPS & 1000TVL CVBS
- + HD-TVI, AHD, HD-CVI, CVBS Selectable Output
- + Color: 0.08 Lux / BW: 0.008 Lux; Color Sense-up: 0.008 Lux / BW Sense-up: 0.0008 Lux

WHAT'S INCLUDED:

- + (1) 2.43 MP HD-TVI/AHD/CVBS/HD-CVI Board Cone Pinhole Security Camera
- + (1) Mounting bracket
- + (1) Quick start guide

See through tiny openings with this compact 2.43 Megapixel HD-TVI/AHD/CVBS/HD-CVI Board Security Camera with a 3.7 mm Cone Pinhole Lens. But don't let its size fool you—it can still deliver clear HD images any time of day.

The camera's 1/3" Sony Exmor CMOS sensor delivers 1080p resolution video @ 30 fps and 1000 TVL CVBS, providing you with the surveillance details you need.

This camera's low Lux rating offers color, auto, and black and white images for low-light applications. This camera has a Lux rating of 0.08 Lux for color, and 0.008 Lux for black and white images. Or you can select the Sense-Up feature, which slows the shutter speed of the camera to allow more light in, allowing you to see in near total darkness. Color Sense-up: 0.008 Lux / BW Sense-up: 0.0008 Lux.

You can enjoy a wide range of compatibility with the camera's selectable output that include HD-TVI, AHD, HD-CVI, and CVBS.

The 3.7 mm fixed lens on this camera offers 71.6° field of view, and to address diverse lighting conditions, this camera's Digital Wide Dynamic Range (WDR) and 3D Digital Noise Reduction (3D-DNR) features ensure that it captures better images no matter the environment.

UTC Control allows you access to the camera's built-in OSD controls, as well as to position the camera with a joystick, removing installation hassle by giving you the ability to adjust the camera remotely.

This compact camera is a mere 1.25" x 1.25", and it has operating temperatures that range 14°F ~ 122°F, which makes it a great indoor solution.



PROTECTION AND WARRANTY

All Supercircuits purchases are protected by a 30-day money-back guarantee, unlimited US-based technical support, and our warranty covers your entire purchase, with no asterisks and no exceptions! The warranty covers all camera and recorder hardware and components, and pre-installed hard drives. If you have an issue, we provide unlimited technical support – and manage all returns and exchanges directly, minimizing unnecessary downtime.

DISTRIBUTED BY:



SUPERCIRCUITS

1.800.335.9777
www.supercircuits.com



1.877.797.7377
www.securitycamerasdirect.com

SPECIFICATIONS

IMAGING SPECIFICATIONS

Imager Type	Exmor CMOS
Imager Size (in)	1/3
Color	Yes
Lines	1000
Camera Resolution (px)	1080p
Megapixel	2.43
Day/Night Function	Color / Auto / B/W
Digital Noise Reduction (DNR)	3D DNR
Electronic Shutter	1/30 ~ 1/50,000 sec
Effective Pixels	1944 x 1092
Flip	Off / MIRROR / V-FLIP / ROTATE & FREEZE
IR Sensitive	Yes
Lux (B/W)	0.008
Lux (Color)	0.08
OSD	Yes
Sense-up	Auto, Up to 30x
Wide Dynamic	D-WDR

LENS SPECIFICATIONS

FOV (degrees)	71.6
Focus	Fixed
Lens Included	Yes
Lens Type	Cone Pinhole
Max Focal Length (mm)	3.7

PHYSICAL CHARACTERISTICS

Dimensions	1.25" x 1.25"
Mounting Bracket Included	Yes
Operating Temperature (F)	14°F - 122°F
Product Color	Black
Outdoor	No
Vandal-proof	No
Weight (lb)	0.2

POWER REQUIREMENTS

Power Supply Included	No
Power (w)	1.3
Volts DC	12

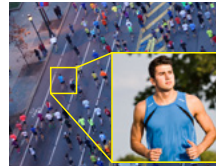
CONNECTORS

Video Output	BNC
--------------	-----

KEY FEATURES

MEGAPIXEL RESOLUTION

Takes & combines multiple images for the best balanced image.



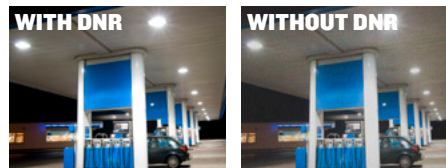
WIDE DYNAMIC RANGE (WDR)

Takes & combines multiple images for the best balanced image.



DIGITAL NOISE REDUCTION (DNR, 3D-DNR)

Reduces image noise in low light conditions.



IP67 WEATHER RATED ENCLOSURE

Protects interior components from dust and rain ingress.



IK10 RATED VANDALPROOF ENCLOSURE

Impact-resistant housing for vandal-prone areas

