
Supercircuits

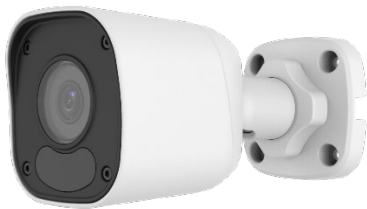
Bullet Cameras

Quick Installation Guide

ENC32-0

ENC34-0

ENC38-0



Safety and Compliance Information

Installation and removal of the unit and its accessories must be performed by qualified personnel. You must read all of the Safety Instructions supplied with your equipment before installation and operation.

Regulatory Compliance

FCC statements

This device complies with Part 15 of the FCC Rules. Operation is subject to the following two conditions: (1) this device may not cause harmful interference, and (2) this device must accept any interference received, including interference that may cause undesired operation.

Caution: The user is cautioned that changes or modifications not expressly approved by the party responsible for compliance could void the user's authority to operate the equipment.

NOTE: This equipment has been tested and found to

comply with the limits for a Class A digital device, pursuant to part 15 of the FCC Rules. These limits are designed to provide reasonable protection against harmful interference when the equipment is operated in a commercial environment. This equipment generates, uses, and can radiate radio frequency energy and, if not installed and used in accordance with the instruction manual, may cause harmful interference to radio communications. Operation of this equipment in a residential area is likely to cause harmful interference in which case the user will be required to correct the interference at his own expense.

Installation

- This device is a class A product and may cause radio interference. Take appropriate measures if necessary.
- Make sure the camera is installed in an environment where the temperature and humidity is within specifications. Protect the

camera from excessive pressure, vibration, moisture, dust, and intensive electromagnetic radiation.

- Use a power adapter or a PoE device that meets requirements. Otherwise, the device may be damaged.
- Make sure the length of the power cable is not too long. Otherwise, the voltage at the camera may be too low, causing the camera to function abnormally. If a long power cable is needed, adjust the voltage at the source or use a heavier cable to ensure the voltage at the camera is always within specifications.
- Do not carry the camera by its drop cable. Otherwise, the cable connector in the camera could be damaged.
- When connecting the camera to an external interface, use an existing connection terminal, and ensure that the cable terminal (latch or clamp) is in good condition and properly fastened. Ensure that the cable is not stretched

during mounting, with a proper margin reserved to avoid poor port contact or loosening caused by shock or vibration.

- The connectors of the drop cable must not be exposed. The bar cavity, waterproof box, pipe, etc. must be fully sealed to protect the connectors from water and other contaminants. The waterproof Ethernet fitting provided for the RJ45 plug must be used to protect the network cable from contamination.
- When transporting the camera, protect the lens to prevent scratches and contamination. To keep the lens cover clean, do not remove the protective film until the camera is mounted and powered on.
- Contact your support organization if you have operational problems. Do not disassemble the camera. We will not assume any responsibility for problems caused by unauthorized repair.

Packing List

The camera package includes the following:

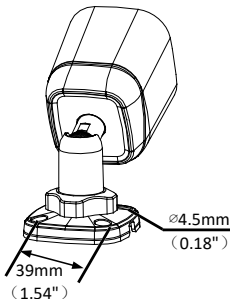
- Camera
- User documents
- Accessory package includes a waterproof Ethernet fitting

Contact your dealer if the package is damaged or incomplete. The attachments may vary with models, please see the actual model for details.

Appearance

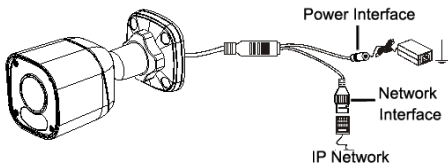
Dimensions

The appearance may vary with device model.



Cable Connection

The drop cable includes an RJ45 Ethernet network connector (PoE capable) and a power connector.

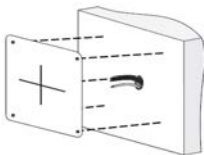


For specifications, see the product datasheet for your camera.

Mount Your Camera

The camera can be mounted on a wall or ceiling. Mounting hardware, sufficient for mounting the camera on many kinds of surfaces, is included with the camera. However, more appropriate hardware may be may be required. A wall mounting example is included in this guide. Ceiling mounting is very similar.

1. Use a drill template to mark the location of the holes.

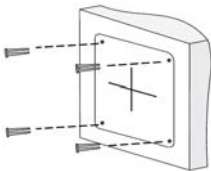


2. Drill holes on the wall. Use a $\frac{1}{4}$ " bit and drill $1\frac{1}{4}$ " deep.

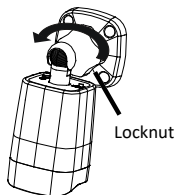


3. If the power and network extension cables routed to the camera are behind the surface, drill a hole for the cables to pass through.

4. Tap the plastic rivets into the guide holes and ensure that they are tight.

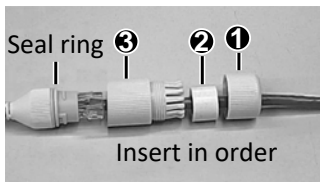


5. Loosen the locknut and adjust the angel of monitor before you attach camera to the wall.



6. Connect the camera drop cable connectors to the network, power and peripheral extension cables as needed. Seal all connections to protect them from water and other contaminants. **DO NOT APPLY POWER TO THE CAMERA AT THIS TIME.**

A waterproof Ethernet fitting is provided. Install the fitting if needed.

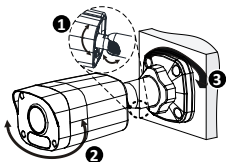


Attach the seal ring to the Ethernet interface. Mount the components in order. Then insert the cable into the Ethernet interface and screw the waterproof bolt in.

7. Mount your camera onto the wall.



8. Point the camera at the preferred surveillance target, and then tighten the locknut.



- 1 Adjust the opening of the universal joints as required.
- 2 Rotate the spherical hinge of the camera to get the desired monitoring direction.
- 3 Tighten the locknut.

9. Power on your camera. Make additional directional adjustments when needed.

Access Your Camera on the LAN

Important considerations:

- You can access your IPC from a PC on the same LAN using Windows 7, 8 or 10 and a browser:
Microsoft® IE 9+ - provides full web features including video playback (requires plugin)
Chrome 57+, Firefox 58+, Edge 16+, Safari 11+. (These browsers **don't** support video playback.)
- See specifications for other options.
- **NOTE:** The ENC38-0 camera does not support Live View in H.265. H.264 is supported.

Logging into the camera

1. Determine the IP address of the camera. If unknown, install the **Guard Tools** (available from your vendor) and use Search to discover compatible cameras on the network. The default address of an IPC is 192.168.1.13. DHCP is enabled, so the actual address can be different.
2. If you are using IE:

- a. Find the IE program in the **Start** menu or in your computer. If in the **Start** menu, right click on it, select **More**, and then select **Run as administrator**. Or, at the IE program file, right click on it, and then select **Run as administrator**.
 - b. Open the IE browser.
 - c. Configure IE so that the IP address of your camera is a **Trusted Site**.
 - d. Set User Access Control is **Never notify**.
3. If you are not using IE, open the browser you prefer to use. See the list above.
 4. Enter the IP address of the camera into the URL address field of the browser, then press **Enter**.
 5. Enter your username and password to log into the camera. The default username is **admin** and default password is **123456**.
 6. If a message appears to install a plugin, follow the on-screen instructions to download and install it. You must close your browser while the

plugin is installing, then reopen your browser and login to the camera again.

7. If the **admin** user password is the default password, **123456**, in the browser go to **Setup > Security > User** to change the password to a strong password (contains at least 9 characters with letters, special characters **and** numbers).
8. Configure and use the camera as needed. Refer to the *Supercircuits IP Cameras User Manual* available from your product vendor.

Maintenance

- If there is dust on the front glass surface, remove the dust gently using an oil-free brush or a rubber dust blowing ball.
- If there is grease or a dust stain on the front glass, clean the glass surface gently from the center outward using anti-static gloves or an oil-free cloth. If it still cannot be removed, use anti-static gloves or an oil-free cloth dipped with detergent and clean the glass surface

gently until it is removed. Do not use solvents, such as benzene or ethanol.