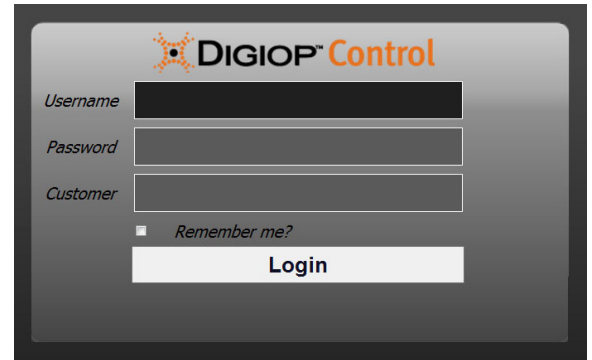


DIGIOP™ Control enables centralized configuration of systems, devices, users, and permissions. It is a web-based administration portal that allows you to manage your video and data from anywhere.

1 Log into DIGIOP™ Control

The DIGIOP™ Control web administration tool is accessed from anywhere using a browser.

- Start IE from the server desktop or from a computer that connect to the server across a LAN.
 - If starting the browser was started from the server desktop, use the default URL, or use this URL: <http://localhost/digiop>
 - If accessing the server from a computer on the network, use the following URL: <http://<ip address of server>/digiop>
Example: <http://192.168.5.43/digiop>
 - For DIGIOP™ hosted servers, use the following URL:
<http://elements.digiop.com>
- The default **Username** and **Password** are **admin** and **admin**.
- The **Customer** name for desktop and local network logins is **digiop** For DIGIOP™ hosted systems, use your assigned customer name. To obtain a customer name, go to <http://elements.digiop.com>, click the link **New Customer?**, then follow the instructions to apply for one. You should receive your Customer name within 1 day.



DIGIOP™ Control



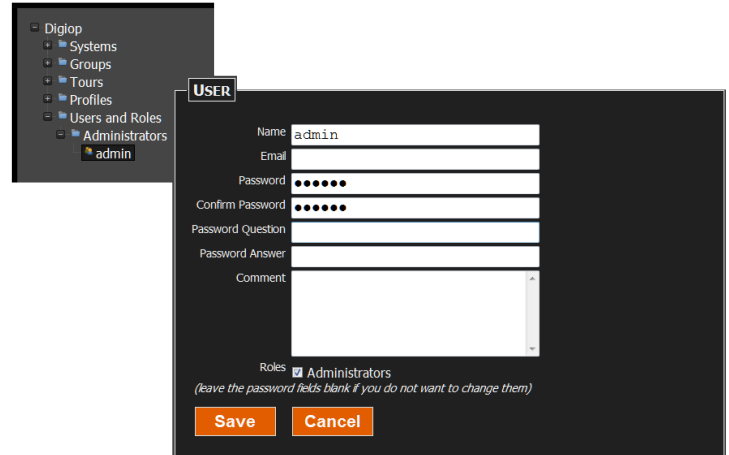
NOTE: In this example, C5WSDP1 is the system hostname



2 Change Default admin Password

For added security of your server, it is strongly recommended that the default **admin** username password be changed during the initial system setup:

- In the left pane, click the **+** icon associated with **Users and Roles** to expand the tree, then click the **Administrator** **+** icon. See the figure above.
- Click the **admin** username entry to select it (darken the background), then click the **Edit** button at the top of the window.
- In the **User** menu, enter a new password in the **Password** and **Confirm Password** fields, then click **Save**.



3 Add IP Camera to the Server

IP cameras are auto-discovered and auto-configured.

- Expand the **Systems** branch in the left pane, then click the **Video Server** icon to select it.
- Click the **New** button at the top of the window.
- In the **Add a camera** menu, click the **select** link for the camera with the IP address that you want to add. Allow the Control screen to synchronize before continuing.

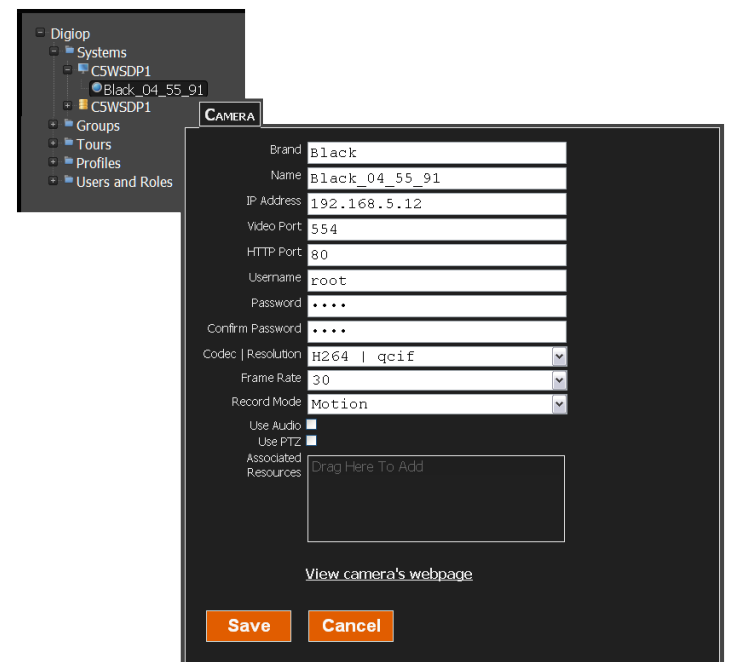
NOTE If an entry for the camera you added does not appear in the tree with the video server, click **refresh**.



4 Edit Camera Settings

Each camera added to the server is configured with default parameter settings. To edit these settings:

- In the tree, click the entry for the camera you added to select it (darken the background), then click the **Edit** button at the top of the window.
- Edit the entries in the list to change the settings as needed. For the entries **Coded | Resolution**, **Frame Rate**, **Record Mode**, **Pre-motion Sec** (seconds), and **Post-motion Sec** select an options from a drop-down list.
- Click the checkbox to select **Use Audio**, **Use Analog Audio**, and/or **Use PTZ** if applicable.
- Click **Save** to confirm the new settings and return to the Home screen.



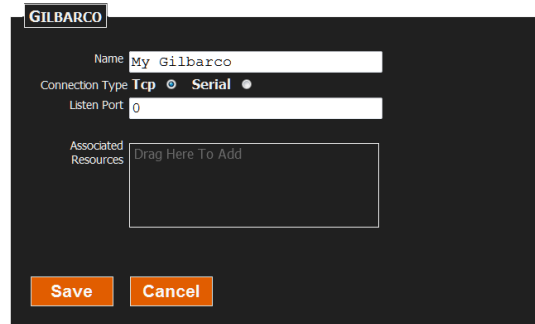
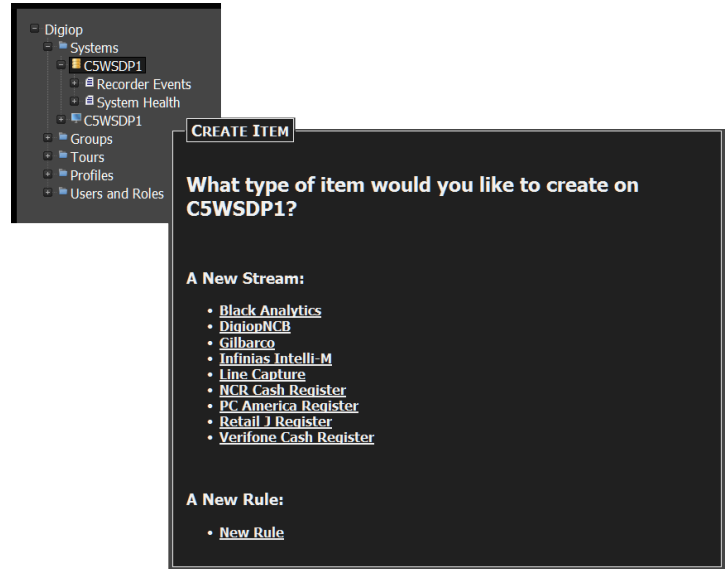


5 Add a Data Stream to the Server

Data streams are added to the Data Server. The DIGIOP™ Control includes presets for common data streams, including real sources and emulators. To add a data stream:

- Expand the Systems branch in the left pane, then click the **Data Server** icon to select it.
- Click the **New** button at the top of the window.
- In the **Create Item** menu, click the preferred **New Stream** link to select it. The options screen for the data stream selected will open. In the example used here, the Gilbarco Cash Register option was selected.
- In the edit menu for the Gilbarco register, set the options as needed.

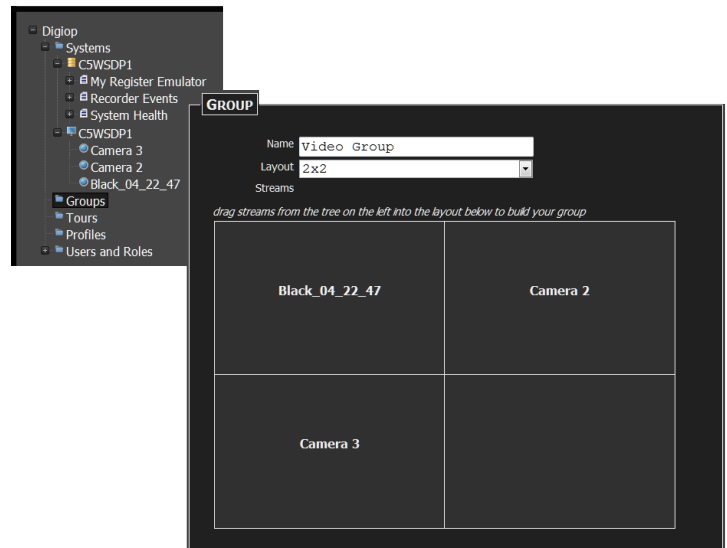
NOTE For additional information about data streams, including data stream types and options, and setting up Rules, refer to the DIGIOP™ Core Server Technical Guide.



6 Create Group

A group is a collection of cameras and/or data streams that can be displayed in a single layout when viewed with DIGIOP™ Connect. To create a group:

- Click the **Group** object in the tree to select it.
- Click the **New** button at the top of the window.
- In the **Group** menu:
 - Edit the Name field to identify your group appropriately.
 - Click the down arrow in the Layout field and select the viewing frame layout for your group. In the example to the right, a 2x2 frame layout was selected.
 - Drag an item created in the **Data Server** or **Video Server** branches to a frame in the layout. Repeat to add other cameras or data streams.
- Click the **Save** button (not shown here) at the bottom of the Group menu to create the group

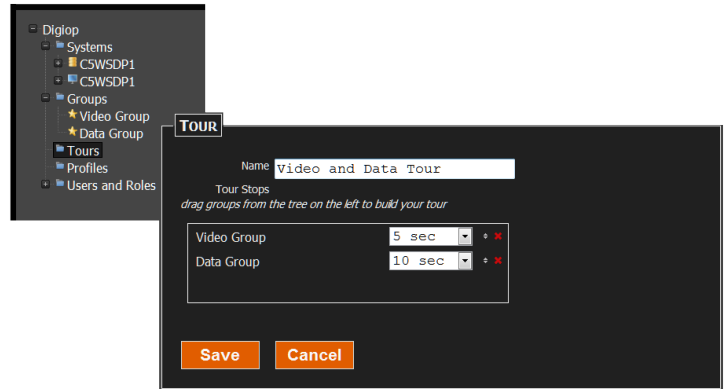




7 Create Tour

A tour is a collection of groups that play sequentially and indefinitely with DIGIOP™ Connect. DIGIOP™ Connect has several dwell times presets that vary from 1 second to 5 minutes. To create a tour:

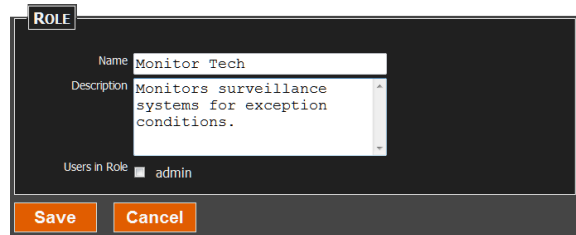
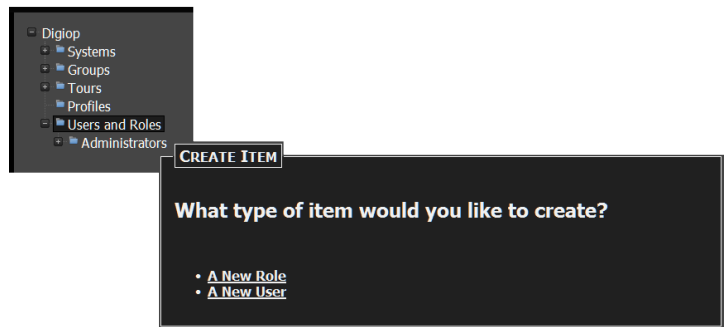
- Click the **Tour** object in the tree to select it.
- Click the **New** button at the top of the window.
- In the **Tour** menu:
 - Edit the Name field to identify the tour appropriately.
 - Drag a group created in the **Groups** branch to the box in the Tour menu. Repeat to add other groups.
 - For each group added, click the down arrow for the time box to select the dwell time for the group.
- Click **Save** to create the tour.



8 Create Role and Permissions

A role is a collection of permissions given to a User. By default, DIGIOP™ Control contains the Administrator role, which includes all configurable permissions. Additional Roles can be created for different types of users with different sets of permissions. To create a role:

- Click the **Users and Role** object in the left pane to select it.
- Click the **New** button at the top of the window.
- In the **Create Item** menu, click **A New Role**.
- In the **Role** menu, enter a **Name** for the role. You can also enter a description if needed.
- Click **Save** to create the role.
- Click the **Customer Name** in the left frame at the top of the tree. In the examples shown here, the Customer Name is **Digiop**.
- Click the **Permissions** icon at the top of the window.
- For the Monitor Tech role, click the checkboxes to select permissions to assign to the role.
- Click **Save**.

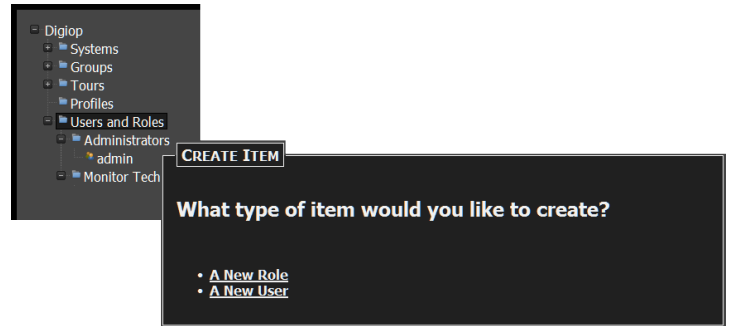




9 Create User

A user represents a login credential with a specific a role (set of permissions). To create a User:

- Click the **Users and Role** object in the tree to select it.
- Click the **New** button at the top of the window.
- In the **Create Item** menu, click **A New User**.
- In the **User** menu, enter a **Name**, **Email** address, **Password** and **Confirm Password**, and a **Password Question** and **Password Answer**. You can also enter a **Comment** for the user.
- Click **Save** to create the user.



USER

Name:

Email:

Password:

Confirm Password:

Password Question:

Password Answer:

Comment:

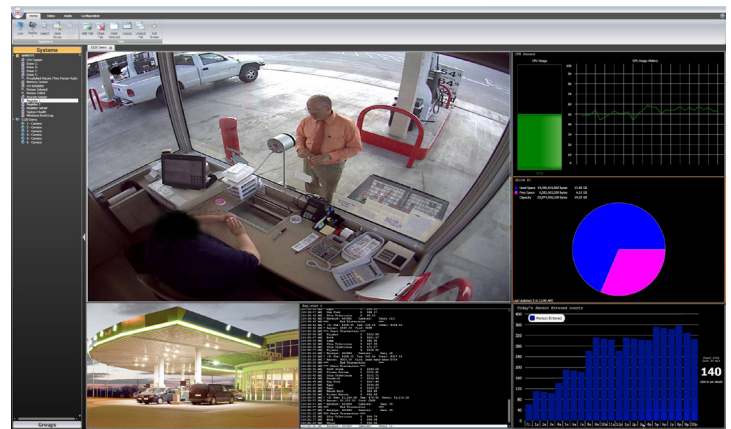
Roles: Administrators Monitor Tech

(leave the password fields blank if you do not want to change them)

NOTE For additional information about using DIGIOP™ Control, refer to the DIGIOP™ Control User Manual or the DIGIOP™ Core Server Technical Guide.

10 View Video and Data from the Server

To view video from the cameras configured on your server, data from the data streams, and view groups and tours configured here, open DIGIOP™ Connect. Refer to the DIGIOP™ Connect Quick Start Guide and Software User Manual for more information.





Notes





Copyright © 2011 DIGIOP, Inc. • Indianapolis, IN • tel: 800.968.3606 • fax: 317.663.2077 • support: 877.972.2522 • www.digiop.com
DIGIOP is a trademark of DIGIOP, Inc. All rights reserved.



QSG-800-CLS