



# DIGIOP™ Connect Software User Manual

Products: AH Series, EH Series, PH Series Hybrid DVRs  
AI Series, EI Series NVRs



Please read this manual before using your software, and always follow the instructions proper use. Save this manual for future reference.



## **LEGAL NOTICE**

DIGIOP™ products are designed to meet safety and performance standards with the use of specific DIGIOP authorized accessories. DIGIOP disclaims liability associated with the use of non-DIGIOP authorized accessories.

The recording, transmission, or broadcast of any person's voice without their consent or a court order is strictly prohibited by law.

DIGIOP makes no representations concerning the legality of certain product applications such as the making, transmission, or recording of video and/or audio signals of others without their knowledge and/or consent. We encourage you to check and comply with all applicable local, state, and federal laws and regulations before engaging in any form of surveillance or any transmission of radio frequencies.

Other trademarks and trade names may be used in this document to refer to either the entities claiming the marks and names or their products. DIGIOP, Inc. disclaims any proprietary interest in trademarks and trade names other than its own.

**Microsoft, Windows, and Internet Explorer** are either registered trademarks or trademarks of Microsoft Corporation in the United States and/or other countries.

No part of this document may be reproduced or distributed in any form or by any means without the express written permission of DIGIOP, Inc.

© 2011 DIGIOP, Inc. All Rights Reserved.

3850 Priority Way South Drive, Suite 200, Indianapolis, IN 46240  
Sales/Support: 1.877.972.2522



# Table of Contents

<b>SECTION 1</b>	<b>Introduction</b> .....	<b>1</b>
	1.1 Installing DIGIOP™ Connect .....	1
	1.1.1 Initial check for software updates .....	2
	1.1.2 Automatic software updates .....	2
	1.2 Login options .....	3
	1.3 DIGIOP™ Connect Help .....	5
	1.4 Logout .....	5
<b>SECTION 2</b>	<b>Configuring DIGIOP™ Connect</b> .....	<b>6</b>
	2.1 Initial server configuration .....	6
	2.2 Adding additional sources (Video or Data Servers) .....	8
	2.3 Editing and deleting sources .....	8
	2.4 Refreshing sources .....	9
<b>SECTION 3</b>	<b>View Video or Data</b> .....	<b>10</b>
	3.1 <b>Layout Options</b> .....	<b>11</b>
	3.2 Creating Groups .....	12
	3.3 Creating Tour .....	14
	3.3.1 Edit Tour .....	17
	3.4 Viewing frame functions .....	18
	3.5 Undocking and re-docking viewing frames .....	19
<b>SECTION 4</b>	<b>Camera Controls</b> .....	<b>20</b>
	4.1 Using PTZ camera controls .....	20
	4.2 Using camera preset controls (PTZ cameras only) .....	21
	4.3 Using digital zoom camera controls .....	21
	4.4 Using audio controls .....	22
<b>SECTION 5</b>	<b>Searching Recorded Video</b> .....	<b>23</b>
	5.1 Playback (transport) controls .....	23
	5.2 Replay search (quick video search) .....	23
	5.3 Calendar and Thumbnails searching .....	24
	5.3.1 Calendar search method .....	25
	5.3.2 Thumbnails search method .....	26
	5.4 Exporting video from a search .....	30
	5.5 Saving images from searched video .....	31





## SECTION 1

# Introduction

DIGIOP™ Connect is a unified dashboard that beautifully displays numerous video and data sources from multiple sites together in single screen. DIGIOP™ Connect allows you to have a virtual presence in all your locations and to remotely manage your facilities, property and assets; cash and inventory; customers and employees; and processes and operations. DIGIOP™ Connect uses a tabbed design with many flexible layouts of up to 36 video and data sources per tab.

With powerful search tools like Thumbnail Search, Timeline Search, Replay Search, Digital Zoom, and Tours, DIGIOP™ Connect makes finding the video or data you need simpler than ever before. Once you've located that segment of video or data, save and export it for offline use with just a click.

DIGIOP™ Connect runs on Microsoft® Windows® XP Professional with SP2, Windows Vista, and Windows 7.

### 1.1 Installing DIGIOP™ Connect

DIGIOP™ Connect is provided on the Application disk included with your NVR or hDVR system software.

During the installation process, the DIGIOP™ Connect installer will load Microsoft .NET Framework 4.0, if not previously installed.

1. Insert the Application disk into a DVD drive on your computer and allow it to open automatically.



2. Click the button to load DIGIOP™ Connect, then follow the screen prompts to install it on your computer. After you the software is installed, the DIGIOP™ Connect icon (see below) will appear on the desktop and an entry will be added to the Windows Start Menu.



### 1.1.1 Initial check for software updates

By default, DIGIOP™ Connect will check for updates automatically after login. Updated software ensures that you have the most recent enhancements for both the DIGIOP™ Connect software and online help. The automatic update feature can be disabled (see below).

**NOTE**

*Installing a DIGIOP™ Connect software update retains all configuration settings (including video and data source settings) made previously.*

#### To update the initial installation of DIGIOP™ Connect software

1. Launch DIGIOP™ Connect by double clicking the desktop icon or opening it from the Start menu. The DIGIOP™ Connect login window will open.



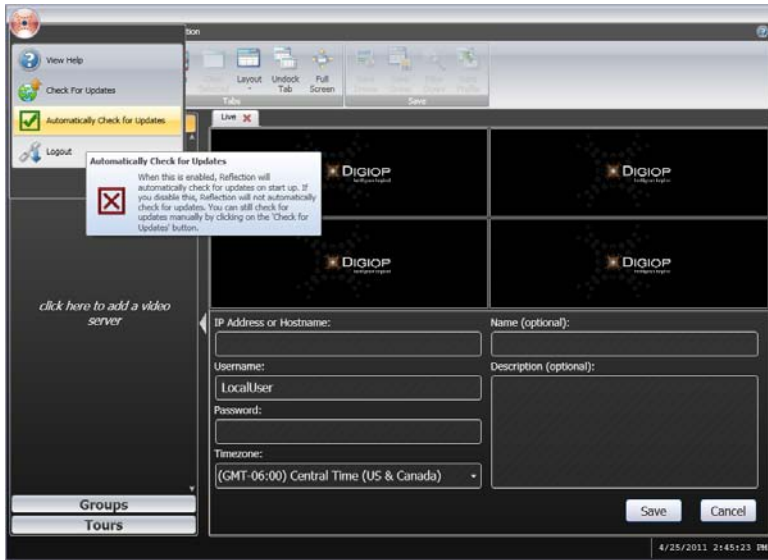
*Connect Login window*

2. Click **Login** to start DIGIOP™ Connect. (Initially, no Username and Password is required to start DIGIOP™ Connect.) If a newer version of DIGIOP™ Connect is available, follow the on-screen instructions to install it.

### 1.1.2 Automatic software updates

Automatic DIGIOP™ Connect software updates are enabled by default. The first time this software is used, it checks newer versions of the software, and updates itself automatically. To perform this check whenever DIGIOP™ Connect is launched, skip this procedure. To disable this feature, do the following:

1. After logging into DIGIOP™ Connect, click the icon in the upper-left corner of the DIGIOP™ Connect window.



*Automatically Check for Updates option*

- In the drop-down window, if the option **Automatically Check for Updates** is checked, click it to disable the option. The checkbox will be replaced by an X-box icon.

## NOTE

*If the option to **Automatically Check for Updates** is disabled, it is highly recommended to manually check for updates periodically. To manually check for updates, click the **Check for Updates** option in the drop-down list.*

## 1.2 Login options

DIGIOP™ Connect provides three types of login options depending on how your DIGIOP™ NVR/hDVR is configured:

- **Local:** This type of site login allows you to setup access to several video and data servers and to establish groups and tours. All connection settings, including your username and password for each NVR/hDVR and the Groups and Tours you created, are saved on the computer you logged in with.
- **elements.digiop.com:** This login option is available when DIGIOP™ provides hosted services for your NVRs and hDVRs. Your account will have a unique Customer name assigned by DIGIOP™, and your connection settings, users, permissions, tours and groups setup, etc are saved at DIGIOP™. This type of login allows you to automatically retrieve these settings from any computer you log in from.
- **Other:** You can use this type of login to connect to a single NVR or hDVR. Your access to the NVR or hDVR provides all the privileges assigned to your username, including all Groups and Tours you can use that were configured through DIGIOP™ Control. When you use this option, you will connect to both the video and data server in your NVR or hDVR.



## SECTION 1: INTRODUCTION

The screenshot shows the DIGIOP Connect login interface. At the top, the logo and text 'DIGIOP Connect' are displayed, followed by 'Please login to continue'. Below this are several input fields: 'Username:', 'Password:', 'Site:' (a drop-down menu), 'Customer:' (a text field), and 'Language:' (a text field). The 'Site:' menu is currently open, showing three options: 'elements.digiop.com', '(local)', and 'other'. The '(local)' option is highlighted in yellow. At the bottom of the form is a 'Login' button.

### Local login

1. Launch DIGIOP™ Connect by double clicking the desktop icon or opening it from the Start menu. The DIGIOP™ Connect login window will open.
2. Open the **Site** drop-down menu and select **(local)**.
3. Click **Login** to open DIGIOP™ Connect.

### DIGIOP Hosted login

1. Launch DIGIOP™ Connect by double clicking the desktop icon or opening it from the Start menu. The DIGIOP™ Connect login window will open.
2. In the Login window, enter your Username and Password.
3. Open the **Site** drop-down menu and select **elements.digiop.com**.
4. In the **Customer** field, enter the name assigned by DIGIOP™ to your NVR/hDVR.
5. Click **Login** to open DIGIOP™ Connect.

### “Other” site login

1. Launch DIGIOP™ Connect by double clicking the desktop icon or opening it from the Start menu. The DIGIOP™ Connect login window will open.
2. In the Login window, enter your Username and Password.

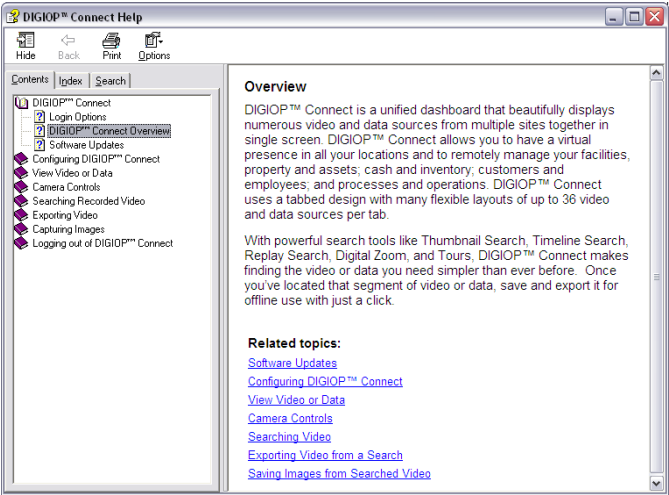


- 3. Open the **Site** drop-down menu and select **other**.
- 4. In the Site field, overwrite the word "other" with the IP address or DNS name of the NVR/hDVR you want to connect to.
- 5. Click **Login** to open DIGIOP™ Connect and login to the video and data servers in your NVR or hDVR.

### 1.3 DIGIOP™ Connect Help

Help is available within the DIGIOP™ Connect software window. To access the Help feature:

- 1. Either click the Help icon in the upper right-hand side of the DIGIOP™ Connect window, or click the DIGIOP™ icon in the upper left-hand corner and then select View Help. A DIGIOP™ Connect Help window will open.



*Connect Help window*

- 2. Each item in the Contents tab can be expanded by clicking the + symbol. Clicking the - symbol collapses the content. Index and Search methods are also available within Help.

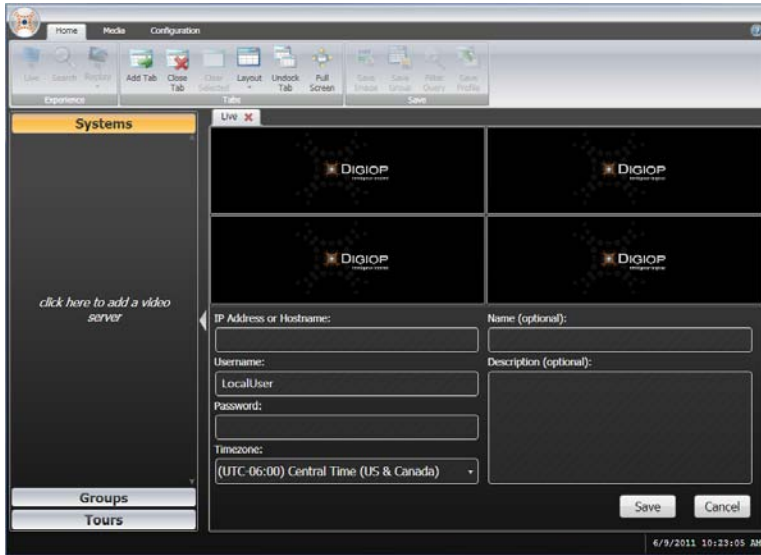
### 1.4 Logout

To log out of DIGIOP™ Connect and return to the DIGIOP™ Connect Login window, click the DIGIOP™ icon in the upper left corner of the DIGIOP™ Connect window, and then click **Logout**.



## SECTION 2 Configuring DIGIOP™ Connect

When DIGIOP™ Connect is installed and launched for the first time, the Configuration tab is displayed. After the initial Video server is configured, Video servers and data servers can be added by following the steps in the Adding Additional Sources section.



Source Management Tab View

### 2.1 Initial server configuration

To enter a video server or data server to DIGIOP™ Connect after the initial installation, perform the following steps:

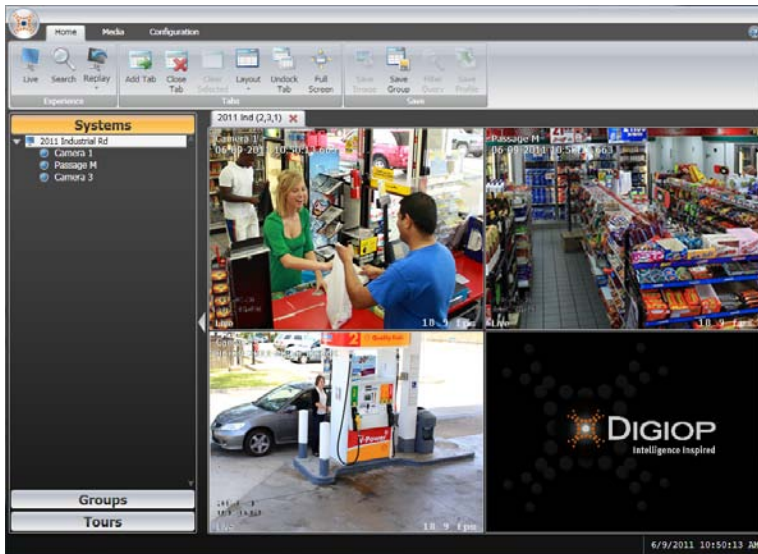
1. Launch DIGIOP™ Connect by double clicking the DIGIOP™ Connect icon on the desktop.
2. Click **Login**.
3. Enter the video server or data server configuration fields with the information necessary to identify your source. It may include:
  - **IP Address or Hostname** – This is the IP address or the host name of the video server or data server
  - **Username** – This is the username that is to be used to access the Video server or data server.



- **Password** – This is the password associated with Username.
- **Port** – (Visible for data servers only.) The TCP/IP port number that DIGIOP™ Connect will use to connect to the data server. The default port number used by DIGIOP™ Connect is 24752.
- **Time zone** – (Visible for Video Servers only). Select the time zone where the Video server or data server is located from the drop-down list.
- **Name** (optional) – This is the name that identifies the video server or data server within DIGIOP™ Connect.
- **Description** (optional) – Enter a description of the system or other information.

IP Address or Hostname: 192.168.5.11	Name (optional): 2011 Industrial Rd
Username: admin	Description (optional):
Password: *****	
Timezone: (GMT-06:00) Central Time (US & Canada)	
<input type="button" value="Save"/> <input type="button" value="Cancel"/>	

4. Click **Save**. DIGIOP™ Connect will connect to the video server or data server and display the Name in the left panel Systems list.



*Example List of Systems*



## 2.2 Adding additional sources (Video or Data Servers)

To add additional video server or data server to DIGIOP™ Connect:

1. Click the **Configuration** tab.
2. Click the down arrow on the **Add** icon, and then select one of the following options:
  - **Digiop Data Server** – Select this to add a data source from a database or third party software program. Data sources may include cash register point of sale, electronic access control, time and attendance, video analytics, or other systems.
  - **Digiop Video Server** – Select this to add a NVR or hDVR. It allows the viewing of individual cameras.



3. Enter the configuration fields with the information necessary to identify your source. See section 2.1.
4. Click **Save**. DIGIOP™ Connect will connect to the video or data server, and display the Name in the left panel Systems list.

## 2.3 Editing and deleting sources

To edit a source, perform the following steps:

1. Click the **Configuration** tab.
2. Select (click to highlight) the item within the Systems or Groups lists to be edited.
3. Click **Edit**.
4. Make the necessary changes to the information in the configuration fields, and then click **Save**.

To delete a source, perform the following steps:

1. Click the **Configuration** tab.



2. Select (i.e., click to highlight) the item to be deleted within the Systems or Groups lists.
3. Click **Delete**.
4. Click **OK** to confirm the deletion.

## 2.4 Refreshing sources

The Refresh feature updates the DIGIOP™ Connect window after changes were made to the video or data sources. For instance, if a camera name in a video server to which DIGIOP™ Connect is connected was changed, the new name will appear after the DIGIOP™ Connect window is refreshed.

To perform a refresh, do the following:

1. Click the **Configuration** tab.
2. Select the source to be updated within the Systems or Groups lists.
3. Click **Refresh** to update the system configuration.



## SECTION 3

# View Video or Data

With DIGIOP™ Connect you can view:

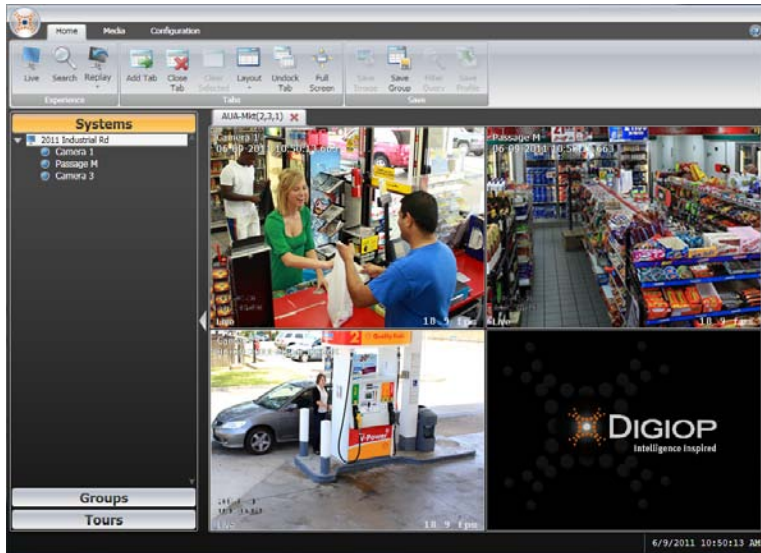
- **DIGIOP™ Video Server:** This represents a DVR and will allow the viewing of individual cameras.
- **DIGIOP™ Data Server:** Use this option to add a data source from a database or third party software. (Data sources may include cash register point of sale, electronic access control, time and attendance, video analytics, or other systems.)

DIGIOP™ Connect supports layouts with up to 36 frames. To view a video or data source:

1. Click the triangle to the left of a System name to expand its list. For Video Servers, the camera list is displayed. For Data Servers, data channels are displayed.



2. Click the **Home** tab, and then click the **Live** icon (or open the dropdown list under the Layout icon to select the layout of camera images to be shown).
3. Click and hold down the mouse button on an item listed in the Systems list and drag it to a viewing frame. The video or data stream from that item will appear. Repeat with other items listed in the Systems or Groups lists that you want to see.



*Example showing three cameras on a Live tab*

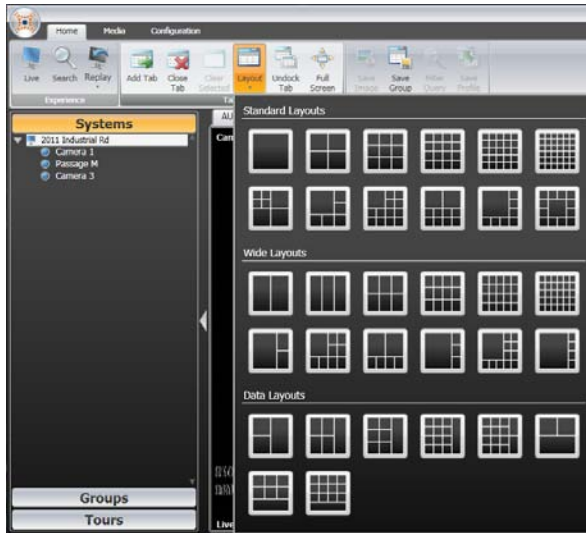
## NOTE

*Dragging the name of a video server listed in the Systems or Groups lists to any viewing frame displays video from all cameras monitored by that Video server.*

## 3.1 Layout Options

You can create camera and/or data layouts that fit the specific needs of your surveillance or business intelligence objectives. Multiple tabs can be setup, with 2 x 2 frame grids to layouts for up to 36 cameras.

To select a layout, click the **Home** tab, click the down arrow on the **Layout** icon, then click the layout pattern you prefer to use.

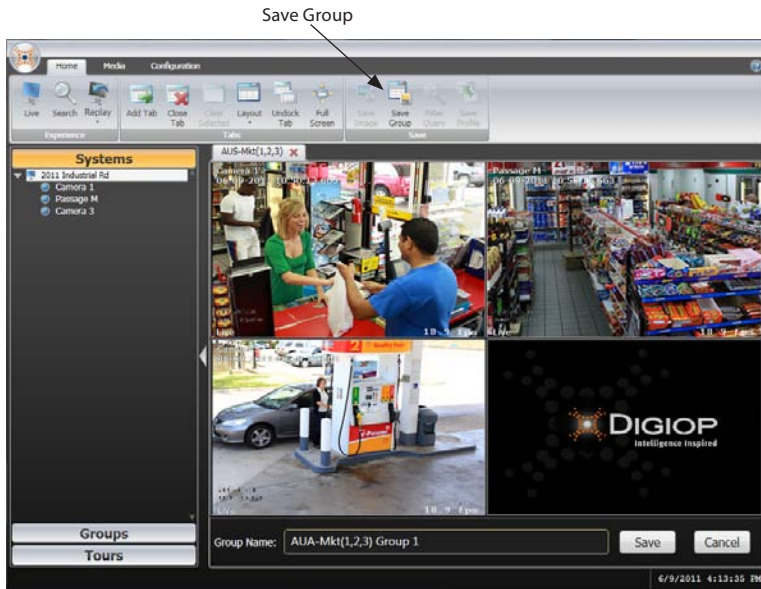


## 3.2 Creating Groups

Camera images in DIGIOP™ Connect can be saved as a group. The name given to a group is displayed in the Groups list. Like a system, a group can be displayed at any time.

To save displayed camera images as a group name, do the following:

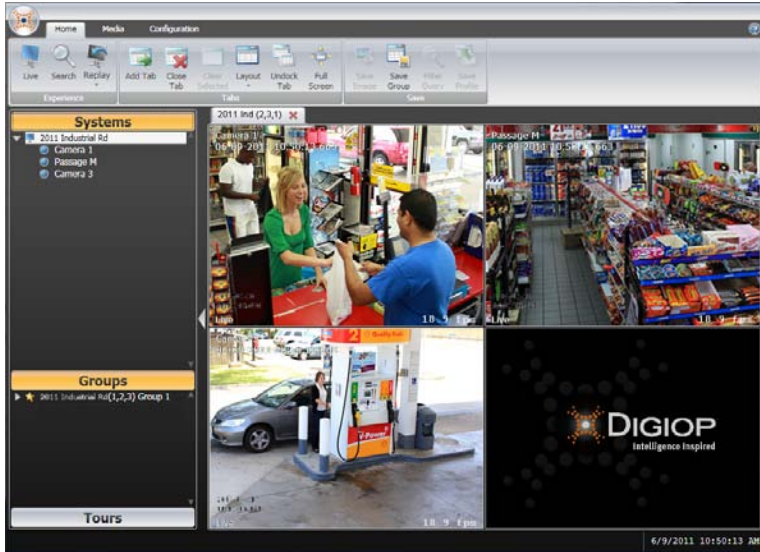
1. Open a selection of camera images or data sources in the viewing frames.
2. Click the Home tab, and then click the **Save Group** icon.



3. Enter a name in the Group Name field, then click **Save**. The group name will appear in the Groups list. To see the cameras in the list, click the **Groups** title bar, then click the triangle to the left of the group name you created.



## SECTION 3: VIEW VIDEO OR DATA



To view the items in a group, do the following:

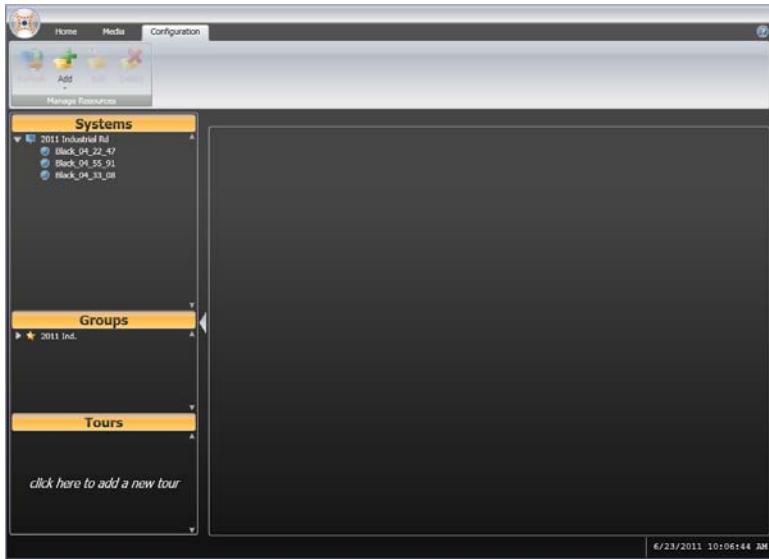
1. Click the **Home** tab, and then click the Live icon (or open the dropdown list under the Layout icon to select the layout of camera images to be shown).
2. Click and hold down the mouse button on an item listed in the Groups list and drag it to a viewing frame. The video or data stream from that item will appear. Repeat with other items listed in the Systems or Groups lists that you want to see.

### 3.3 Creating Tour

Individual camera images, Groups, and Systems can viewed sequentially in DIGIOP™ Connect by constructing a Tour. In the Tour, each individual camera, Group, or System is assigned a dwell time and a position in the order of items that are included. The tour can be played, paused, manually stepped back to the previous image(s) shown or stepped forward to the next images.

To construct a tour, do the following:

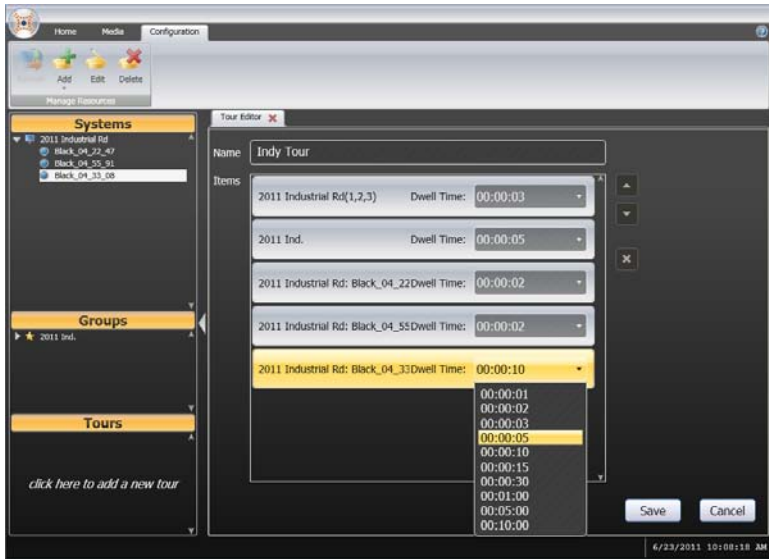
1. Click the **Tours** bar in the left frame (below the Groups bar).
2. In the blank space below the Tours bar to “add a new tour.”



3. In the Tour Editor tab:
  - a. In the Name field, enter a name for your tour. In the example below, the tour is named “Indy Tour”.
  - b. Add individual cameras, systems, or groups to the tour by dragging them from the left frame and dropping them into the Items box. In the example above, the following were added:
    - The system: “2011 Industrial Rd.”
    - The group: “2011 Ind.”
    - The three individual cameras listed under the system “2011 Industrial Rd.”
  - c. For each item added to the tour, click the down arrow on the right of the entry to open dwell time selection window, then click the dwell you want to assign to the item in the tour.



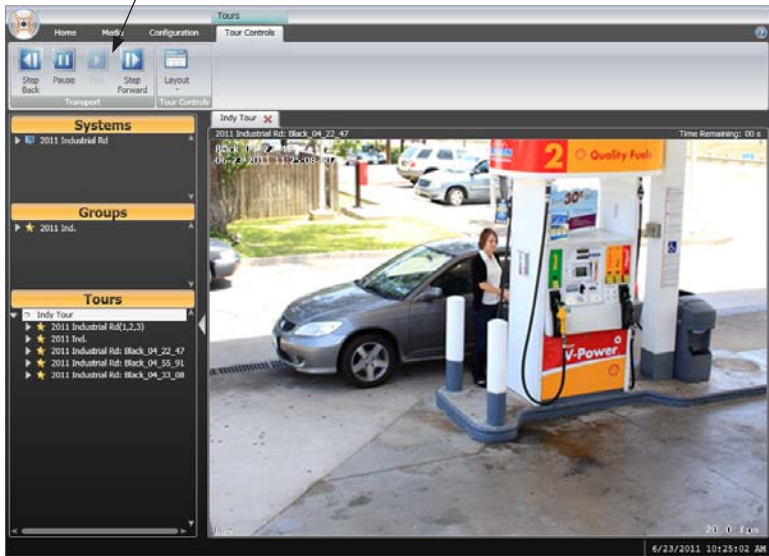
## SECTION 3: VIEW VIDEO OR DATA



- d. Click **Save** to save your tour.
4. To run the tour, drag the tour name ("Indy Tour" here) to an unassigned pane in the viewing frame. Click the tour play control buttons in the upper-left corner to "**Step Back**", "**Pause**", resume "**Play**", and "**Step Forward**".



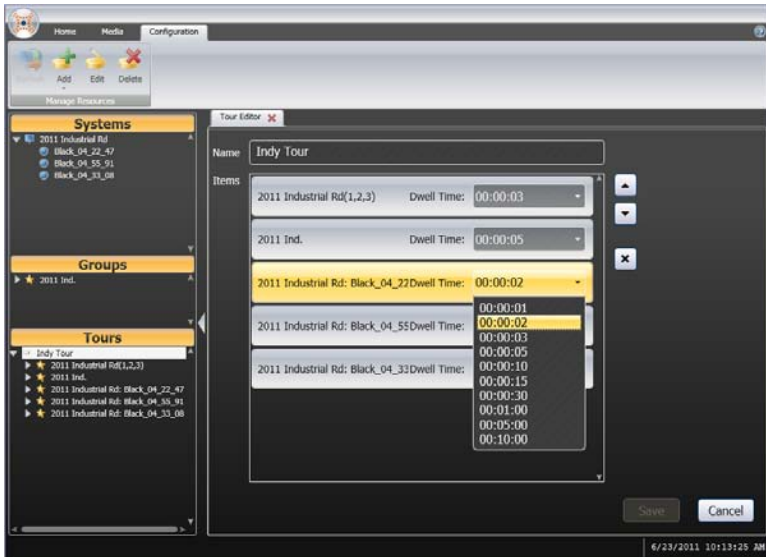
Tour Play Control Buttons



### 3.3.1 Edit Tour

To edit a tour:

1. Close the tour if it is running.
2. Click the Configuration tab at the top of the window.
3. In the Tours list, click the tour entry you want to edit.
4. Click the Edit icon the Configuration tab.



5. In the Tour Editor tab, click the item entry you want to change to highlight it.
  - To change the dwell time, click the down arrow on the right of the item bar, then select the new dwell time for that item.
  - To change the order of the items in the display, click the item to highlight it, then click the up and/or down buttons to the right of the Items list to reposition it in the list order.
  - To delete an item, click the item to highlight it, then click the “X” button to the right of the Items list.
6. Click Save to save the changes you made to the tour.

### 3.4 Viewing frame functions

Video from individual cameras can be:

- double-clicked within the viewing frame to toggle to and from a single-pane view
- selected (highlighted) in the Systems or Groups lists and viewed as live video
- play back (simultaneously affects all displayed video panes) 1, 2, 5, or 15 minutes of recorded video
- searched

Viewing frames can be selected (i.e., highlighted) by mouse click and:

- displayed as Full Screen (type the **ESC** key to revert back)
- viewed in a variety of viewing layouts (up to 36 camera images on a single tab)
- closed (which will remove the camera images as well as the viewing tab)
- cleared



### 3.5 Undocking and re-docking viewing tabs

Any selected tab can be undocked from the DIGIOP™ Connect software panel. This feature allows the undocked tab to be moved freely on the desktop while simultaneously viewing other tabs still attached to the software panel. See below. The undocked tab can be re-attached (docked) with a single mouse click.

To release a viewing pane tab so that it is unattached from the DIGIOP™ Connect software panel, perform the following steps:

This feature allows for full multi-monitor support. This feature can be setup so that one tab can be showing live video from a camera, while another tab can be used for searching recorded video.

1. Make sure the viewing tab to be released from the software window is active in the viewing area.

#### NOTE

*The undock feature affects all of the frames being displayed in the tab.*

2. Either click the **Undock** tab icon, or click and hold the tab and drag it from the software window.

Drag the viewing tab out of the window to make a separate window



3. To re-attach the viewing tab to the DIGIOP™ Connect software window, click the **Dock** tab icon.

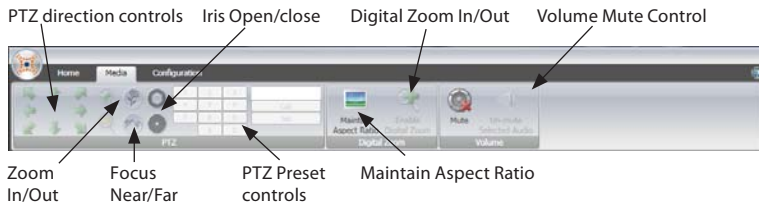


## SECTION 4 Camera Controls

Camera controls are included in the Media tab menu. The controls enabled for a camera are dependent on the features of the camera selected.

### NOTE

*The PTZ (Pan, Tilt, and Zoom) controls are only active if the camera selected is a PTZ camera.*



*Media controls*

### 4.1 Using PTZ camera controls

PTZ camera controls become active when the Media tab is selected and the camera selected is a PTZ camera.

The PTZ camera controls are:

- **Motion Direction** controls (directional arrows) – A mouse click on an arrow moves a PTZ camera in the direction of the arrow.
- **Zoom In** – Each mouse click on this control increases the magnification of the camera (which enlarges the view of an object for more detail) until the maximum focal length of the camera is reached.
- **Zoom Out** – Each mouse click on this control decreases the magnification of the camera until the minimum focal length of the camera is reached.
- **Focus Near** – Each mouse click on this control enhances the sharpness of objects that are close by.
- **Focus Far** – Each mouse click on this control enhances the sharpness of objects that are far away.
- **Open Iris** – Each mouse click on this control increases the camera iris (aperture), allowing more light to pass through the lens. This makes the picture brighter.
- **Close Iris** – Each mouse click on this control decreases the camera iris, reducing the amount of light passing through the lens. This makes the picture darker.
- **Preset Controls** – These controls are used to aim a PTZ camera at a predesignated target. Refer to Using Camera Preset Controls (PTZ Only) for more information.



## 4.2 Using camera preset controls (PTZ cameras only)

The Preset Controls allow you to setup a PTZ camera to quickly move to preset target. Each target position is assigned a number. When the camera is selected and the number is “Called”, it quickly moves to that target.

- **Set** – Click to assign a number (1 to 32) to the position currently being used by the camera.
- **Call** – Click to move the camera to the pre-designated direction.



To assign a preset number to a camera direction:

1. Use the PTZ direction controls to aim the camera at a target.
2. Click the number (1 to 32) to assign to the camera direction.
3. Click **Set** to assign the set direction to the number.
4. Repeat Steps 1-3 above for each additional camera.

To Call the camera to a preset direction:

1. Select the camera viewing frame.
1. Click the number (1 to 32) assigned to the camera direction you want see. The number will appear in the blank box.
2. Click **Call**.

## 4.3 Using digital zoom camera controls

The controls listed below will work with all digital video cameras (including PTZ cameras). The controls become active for the camera selected in the viewing pane (refer to “View Video or Data”) and the “Video” tab is the tab in use. The digital zoom video camera controls are:

- **Maintain Aspect ratio** – Click this control to toggle between the original width and height of the video (whatever the camera is set to), and the width and height of the viewing pane. The video will assume the size (ratio of the width and height) of the viewing pane.
- **Zoom In/Out** – To use this feature, select the camera pane, click the **Enable Digital Zoom** icon in the Media menu (see above), then use the “+” and “-” keys on the keyboard or the mouse wheel to zoom in and out.



## 4.4 Using audio controls

Audio controls are enabled for camera channels with sound enabled. Audio controls become active when the Media tab is selected and the camera selected has audio features.



*Audio controls*

The camera audio controls are:

- Mute – Clicking this control mutes the sound from the camera selected.
- Un-mute Selected Audio – Clicking this control enables the sound from the selected camera to be heard. The volume controls of the computer and of the DIGIOP™ Connect software can be used to increase or decrease the volume level.



## SECTION 5

# Searching Recorded Video

Connect provides different methods for finding recorded video. These methods include:

- Replay Search (Quick Video Search)
- Calendar Search
- Thumbnails Search

Use Replay Search find recorded live video for events that occurred within the previous 15 minutes. For older events, the Calendar and Thumbnail searching features provide a precise way to find recorded video. Regardless of the type of search used, a user can switch from recorded video to live video by clicking a viewing tab. Also, live video and recorded video can be viewed concurrently through use of the Undock feature.

### NOTE

*Multiple recordings can be searched simultaneously by using the Layout icon and selecting a view where several camera images are displayed within a viewing tab.*

### NOTE

*During a Search, camera(s) selected in the Systems or Groups lists are displayed above the Timeline. All cameras displaying images are selected during a search.*

## 5.1 Playback (transport) controls

Video playback controls are displayed whenever the Replay or the Search icon is clicked, or when the Replay or Search viewing tabs are active. The playback controls for video searching include:

- **Pause** – Pauses the video being played.
- **Play** – Starts playing the video from the point where the scrub bar is located on the Timeline.
- **Step Forward** – Advances the search playback one frame at a time.
- **Fast Forward** – Increments the speed of video play each time it is clicked. Increments are 2x, 4x, 8x, 16x, 32x, 64x, and 128x.

## 5.2 Replay search (quick video search)

Replay search allows a user to search for and replay video in the previous 15 minutes. To use Replay search, do the following:

1. Select the Live viewing tab with the cameras you want to use for the Replay search.

### NOTE

*It does not matter if a camera frame is selected (highlighted). Replay affects all of the camera images being displayed.*



## SECTION 5: SEARCHING RECORDED VIDEO

- With the Home tab selected, click the down arrow on the Replay icon to replay 1, 2, 5, or 15 minutes of recorded video.



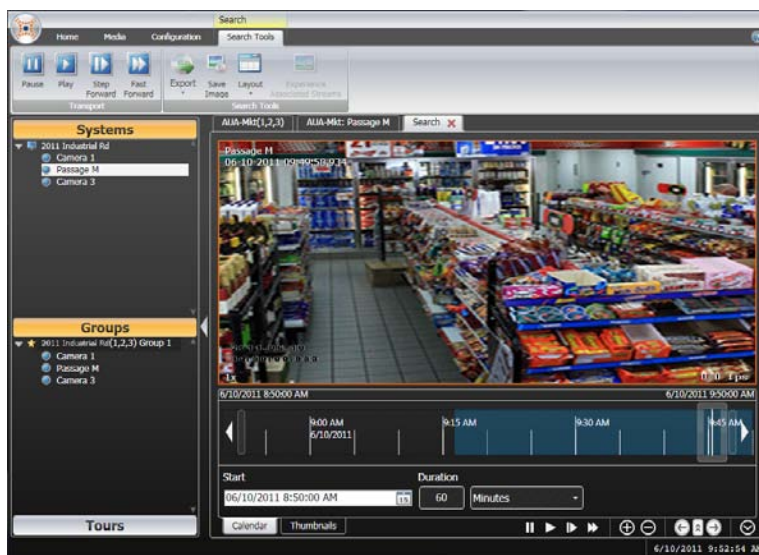
- Use the recorded video transport controls to pause, play, step forward or fast forward playback.

### 5.3 Calendar and Thumbnails searching

The Calendar and the Thumbnails searching methods allow a user to search recorded video in increments that can be set as seconds, minutes, hours, days, or months.

To implement one of these search methods, do the following:

- Select the camera that you want to search from the Systems or Groups list.
- Click the Home tab, and then click the Search icon. A window similar to that shown below will be displayed.



*Searching video*

3. Click either the **Calendar** or **Thumbnails** tab. These tabs are located beneath the timeline.
4. Use the video transport controls review the video segments.

For details on using either search method, refer to the Calendar search method and Thumbnails search method sections below.

#### **NOTE**

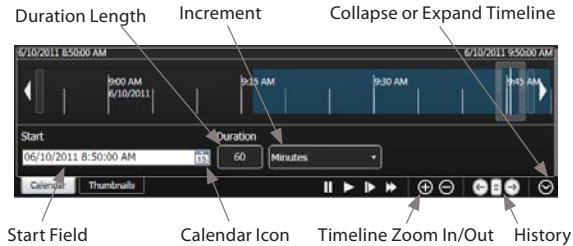
*Use the Calendar view first to establish the time range of video to be searched. The Thumbnails view is another way to view the video once the time range is determined. The Timeline is used to mark the time frame of the event until the exact time and video of the event or detail is found.*

### 5.3.1 Calendar search method

Calendar video search allows you to search video by date, time, and duration with the use of a timeline.



## SECTION 5: SEARCHING RECORDED VIDEO



*Calendar search method*

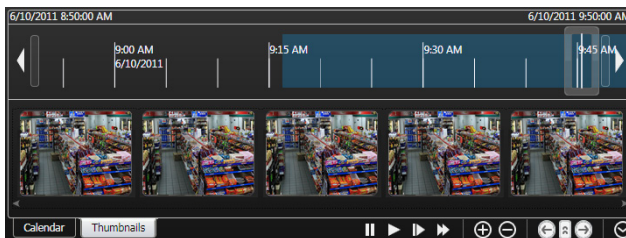
Use the following guidelines to configure the time range of the search:

- In the Start field, click the date entry or click the calendar icon to open a calendar window. Click the start date in the calendar, and then click the calendar icon again to close the calendar window.
- Clicking and holding the mouse pointer on the characters in the month, day, year, hour, minute, or second fields produces a selector cursor. Sliding the cursor upwards or downwards increments or decrements the value in that field.
- Use the Duration drop down list, select a time increment: seconds, minutes, hours, days, or months.
- Edit a duration number (length) in the Duration field.

After the time range is established, the timeline can be used to refine the search. The Start field can be collapsed (hidden) or expanded (shown) by clicking icon in the lower right corner.

### 5.3.2 Thumbnails search method

Thumbnails search method presents 10 thumbnails of video frames, spaced across a defined time range, to help locate a detail or event of interest.



*Thumbnails search method*



Use the following guidelines to perform a Thumbnails search:

- Clicking the forward or backward arrow at either end of the thumbnails shifts the thumbnails left (forward in time) or right (back in time) within the time range of the video frames being searched. This also affects the timeline, increasing or decreasing the range of time shown.
- Clicking on a thumbnail also affects the time grid scrub bar, increasing or decreasing the range of time shown above the thumbnails.
- Resting the cursor on a thumbnail expands the image.



*Highlighted thumbnail range*

#### **NOTE**

*A slider bar, for adjusting the timeline view forward or backward, may be visible directly under the thumbnails depending on the time range of the video selected.*

- Placing the cursor on a thumbnail and holding the cursor there for about one second will enlarge the view of that thumbnail. The time and date of the video frame is also displayed in the enlarged view. If the cursor is not moved from the thumbnail, the enlarged view stays open for 15 seconds.

## **TIMELINE USAGE (CALENDAR AND THUMBNAILS)**

The Timeline tool is a graphical representation of a defined time range of recorded video frames. Since recorded video frames are equal to a set amount of time, observing video within a timeline helps a user determine the exact time that an event or detail occurred.



## SECTION 5: SEARCHING RECORDED VIDEO



*Timeline Tool*

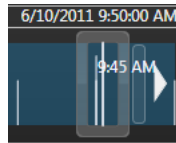
Use the following guidelines to use the Timeline tool for searching video:

- Scrub Bar – Scrub Bar allows a user to navigate across a range of recorded video.

### **NOTE**

*If multiple recordings (cameras, viewing panes) are simultaneously being searched, all of the viewing panes will show the result of the scrub when the scrub bar is released.*

- Use the mouse cursor to drag the scrub bar back and forth along the timeline to move forward or backward within the time range of the video being searched.



*Dragging the scrub bar*

- Increasing or decreasing the range of the timeline determines how many frames of video are used within the time grid.
- The time range can be lengthened or decreased by dragging the handles at each end of the timeline. When using this feature, the handle is highlighted and the cursor changes to an increase/decrease cursor.



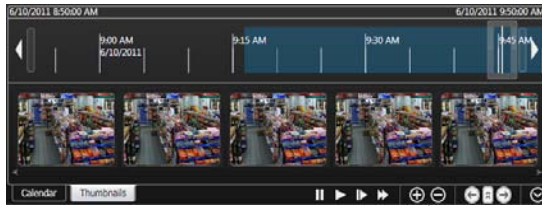
*Time range increase/decrease*

- Use the mouse to drag the timeline back and forth to adjust the start and end times of the video being searched.



*Dragging the Time Grid*

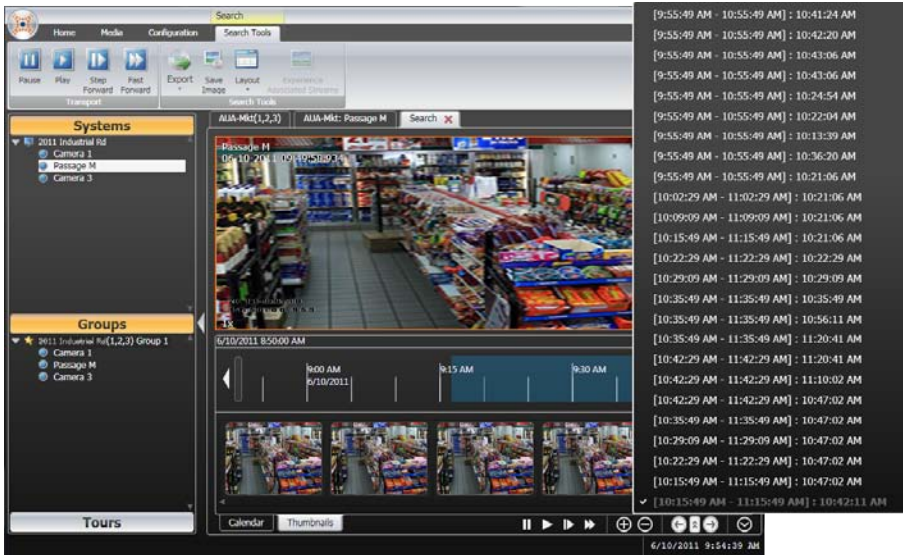
- The Timeline Zoom In or Timeline Zoom Out buttons are used to expand (stretch) or contract (shrink) the timeline displayed. One click on either button changes the compression by 50%.



Timeline Zoom In/Out

### *Narrowing the Search to an Event*

- A record of each action taken during a search is recorded in a Timeline History. Each record includes the time the action was taken and the time range of the video searched. This feature allows you to quickly return to a point of interest during a search by clicking on the record. Click the History toggle button to display the record list; click it again to close it. Clicking the arrows on either side of the toggle button moves forwards or backwards within the time ranges in the history.



### *Example Timeline History*

- The Timeline History is saved until the Search (tab) is closed, or until the top or bottom end-point of the history is highlighted and another action is taken on the timeline.



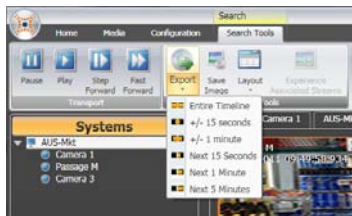
## 5.4 Exporting video from a search

A range of video selected during a search can be exported to a drive connected to the computer using DIGIOP™ Connect. This is useful, for example, if the video needs to be given to police or other authorities. A viewer can be exported with the video.

**NOTE** *A Replay Search (quick video search) can not be exported.*

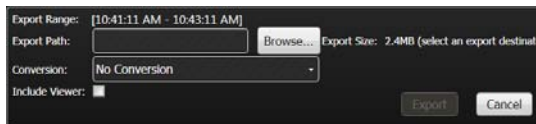
To Export video:

1. Establish the time range of the video to be exported. Refer to the Calendar and Thumbnails Searching.
2. Click either the top half of the Export icon (default for exporting the entire timeline range), or click on the bottom half of the Export icon and select one of the options.



*Selecting video range for export*

3. After the time range of the video is selected, an Export menu is displayed below the camera frames. Click **Browse** to select the destination (Export Path) where the video will be sent. The Export button becomes active when the export path established.

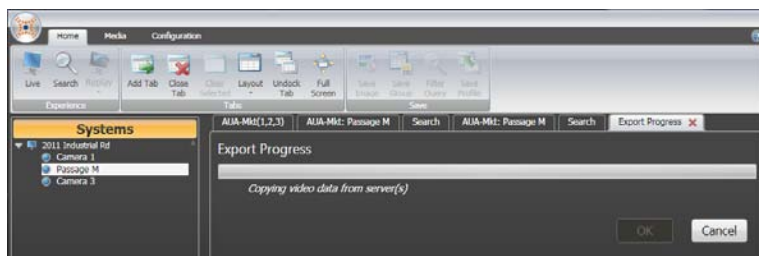


*Export menu*

4. If you want to include a video viewer with the video clip being exported, check the Include Viewer box.
5. Click **Export**. An Export Progress tab will appear.



- When the Export process is complete, the Export Progress tab will close.



*Export progress tab*

## 5.5 Saving images from searched video

A video image (one frame of video) within a search can be saved as a JPG (.jpg) file to your computer or to another drive connected to the computer. Images from Replay Search, Calendar Search, and Thumbnails Search can be captured and saved. To capture and save a video image:

- Find the image to be saved.
- Click the Save Image icon. This will capture the image, and the Save Image window will open.
- Browse to select the destination where the captured image will be sent.
- Enter a name for the file.
- Click **Save**.