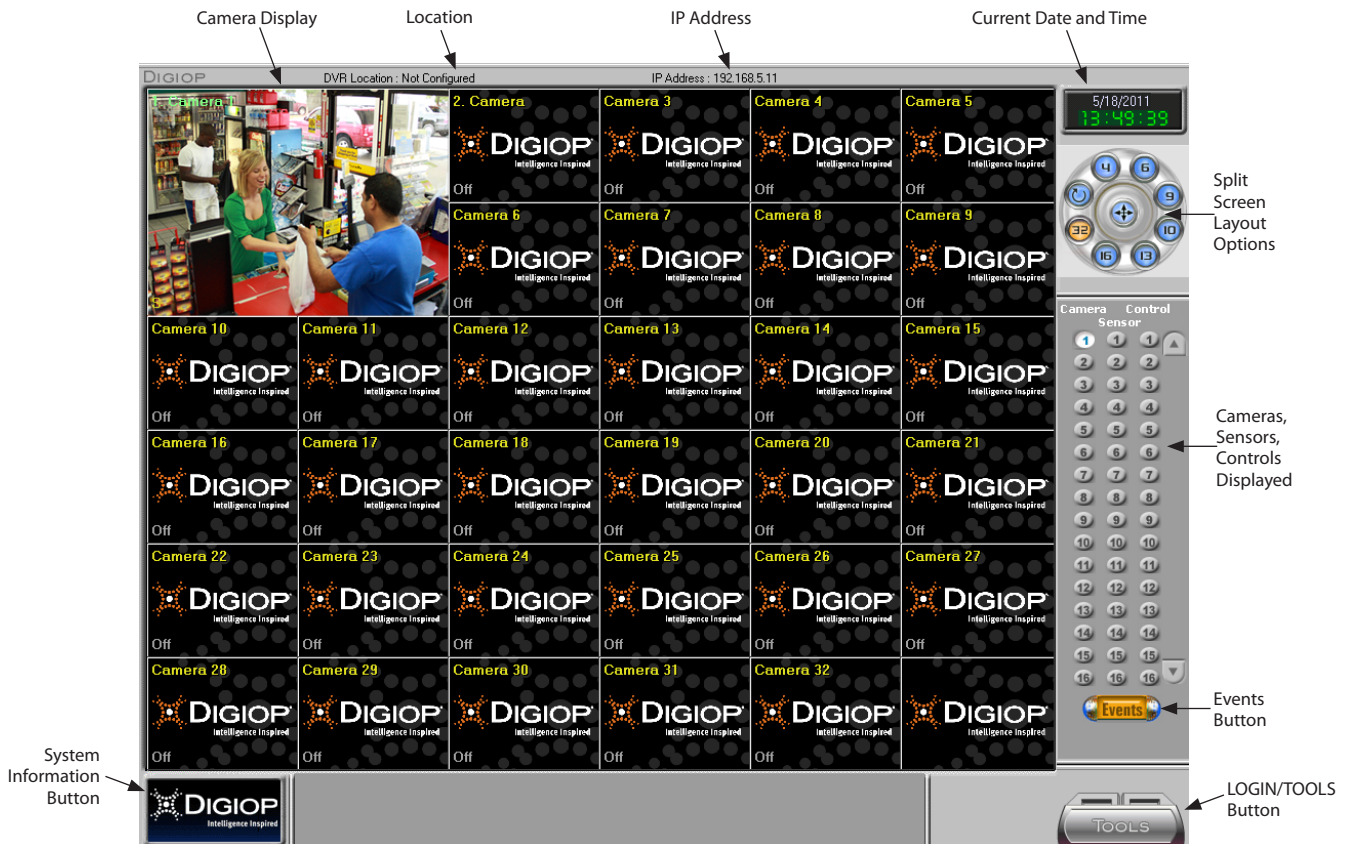


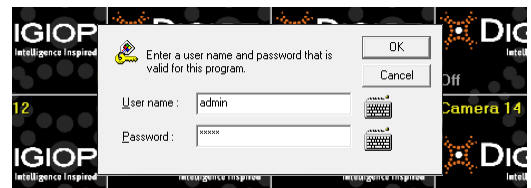
DIGIOP™ Core Kiosk Mode Window

The DIGIOP™ Core server is used to configure hDVR analog cameras. When the server is initialized, a desktop window similar to the following appear.



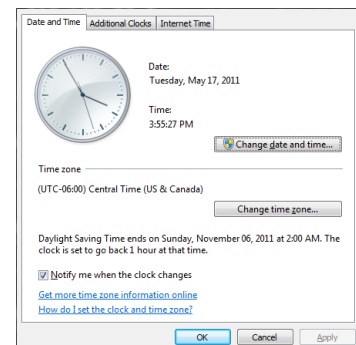
1 Start Up & Log in

- To log in to the DVR, click the **LOGIN** icon on the bottom, right area of the main screen. Enter **admin** for the user name and **admin** for the password, then click **OK**.



2 Set the Date and Time

- Double-click the date and time box in the top, right corner of the screen.
- This will open the Microsoft Windows Date and Time window. Set the Date, Time, Time Zone, and Daylight Saving Time options appropriately for your location.





3 Adjust Camera Settings Tools ➔ Configure ➔ Camera

Camera Selection

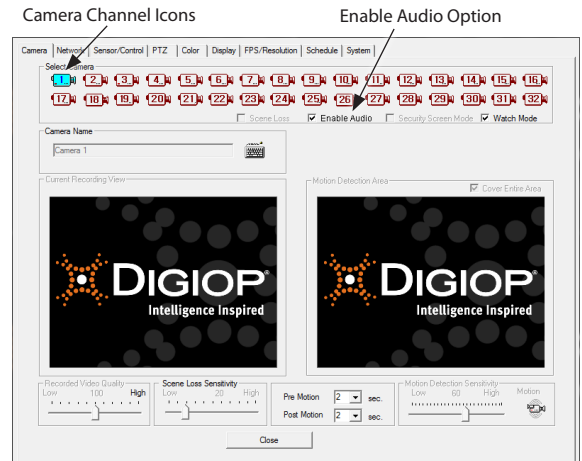
Select (click on) a camera icon to set desired recording time, motion detection range, image quality, resolution, motion sensitivity, etc.

Camera Name

Enter the installed location of the selected camera. Information entered will be displayed on the window for the selected camera.

Settings

Adjust **Motion Detection Sensitivity** (for Analog Cameras) according to the approximate amount of movement in the viewing area. For cameras with excessive movement such as wide-angle views, it is recommended to lower the motion detection sensitivity value to avoid unnecessary recording. Adjust **Scene Loss Sensitivity** to your needs so you can be alerted when the video from a camera is obscured.

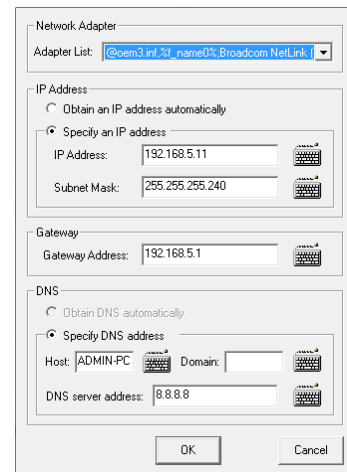


If you set the camera to Motion and the system restarts, it reverts to Continuous recording (default). To keep the Motion setting after a restart, set it in the Schedule tab. Refer to the Server Technical Guide for more information.

4 Set the server IP Address Tools ➔ Configure ➔ Network

If your server has multiple network adapters, edit the network settings for each..

- Under **Network Settings** click **EDIT**.
- Choose either an automatic or manual entry of the IP address.
- If you choose to specify your IP address, fill out the required fields, then click **OK**.



5 Setup User Management Tools ➔ Configure ➔ Display

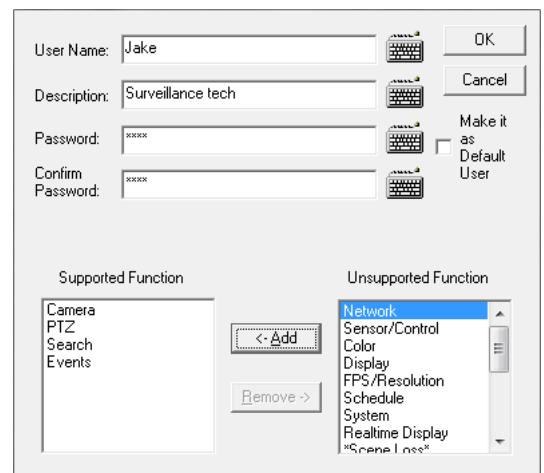
Register New User

- Under **User Management**, click **MANAGE** and then click **ADD**.
- Enter the new user ID and password. Click **OK**.
- Enter the password again to verify and click **OK**. *Add privileges as needed.*
- Click **OK**.

Change Password

To change a user's password, select the user name and click **PROPERTIES**.

Warning **There is no way to recover your new password.** If you forget your password, please contact your dealer or **Product Support (877.972.2522)** for assistance.





6 Frame Rate and Resolution for Analog cameras Tools ➔ Configure ➔ FPS/Resolution

- If the server is in recording mode, pause recording. Go to **Tools ➔ Pause Recording**, then go to **Is ➔ Configure ➔ FPS/Resolution**
- Check **FPS and Resolution Setting per Camera**.
- Set the maximum frame rate for each available resolution based on the system you are using. The **Use/Max** column displays the frame rate your system is currently using and your system's maximum available frame rate. *For example, if your unit is capable of recording 120 frames per second (FPS), you can set the system to record 120 FPS at 352x240, 120 FPS at 720x240, and 90 FPS at 720x480 for a total of 120 FPS. You must divide the frame rate equally.*
- Set the frame rates and resolutions for each analog camera

Notice The FPS total for analog cameras cannot exceed the total FPS available on your system..



7 Recording Schedule for Analog Cameras Tools ➔ Configure ➔ System

- If the server is in recording mode, pause recording. Go to **Tools ➔ Pause Recording**, then go to **Tools ➔ Configure ➔ FPS/Resolution**
- Check **Use Schedule**
- Choose the analog camera you would like to schedule.
- Select either **ALL**, **WORKDAY**, **SATURDAY**, **SUNDAY**, or **HOLIDAY**, or high-light timeslots in the table.
- Choose one of the recording mode based on your preference: **Continuous (C)** stores all images regardless of the movement captured on camera. This mode requires more storage than **Motion Detection (M)**, which stores images only when movement occurs. **Continuous Sensor (C,S)** or **Motion Sensor (M,S)** need to be selected to record when a sensor is activated. **OFF (F)** mode does not perform any recording or surveillance function.

Notice To maximize storage efficiency, use the motion mode for normal, daily recording operations.

Record Option		Workday	Saturday	Sunday	Holiday
All	00:00 ~ 00:59	M	M	M	M
2	01:00 ~ 01:59	M	M	M	M
3	02:00 ~ 02:59	M	M	M	M
4	03:00 ~ 03:59	M	M	M	M
5	04:00 ~ 04:59	M	M	M	M
6	05:00 ~ 05:59	M,S	M,S	M	M
7	06:00 ~ 06:59	M,S	M,S	M	M
8	07:00 ~ 07:59	M,S	M,S	M,S	C,S
9	08:00 ~ 08:59	C,S	C,S	C,S	C,S
10	09:00 ~ 09:59	C	C	C	C
11	10:00 ~ 10:59	C	C	C	C
12	11:00 ~ 11:59	C	C	C	C
13	12:00 ~ 12:59	C,S	C,S	C,S	C,S
14	13:00 ~ 13:59	C,S	C,S	C,S	C,S
15	14:00 ~ 14:59	C,S	C,S	C,S	C,S
16	15:00 ~ 15:59	M,S	M,S	M	M
17	16:00 ~ 16:59	M,S	M,S	M	M
18	17:00 ~ 17:59	M	M	M	M
19	18:00 ~ 18:59	M	M	M	M
20	19:00 ~ 19:59	M	M	M	M
21	20:00 ~ 20:59	M	M	M	M
22	21:00 ~ 21:59	M	M	M	M
23	22:00 ~ 22:59	M	M	M	M
24	23:00 ~ 23:59	M	M	M	M



8 Configure System settings

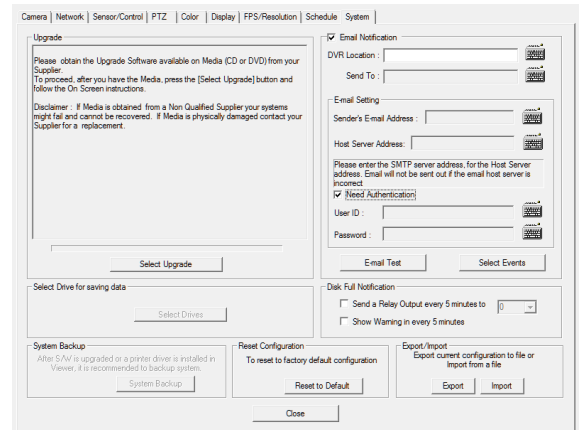
Tools → Configure → System

Reset to Default Configuration

If you are experiencing problems, you can Reset to Default all of the settings. You will not lose any recordings, but all of your settings and configurations will be lost.

Save Export/Import Setting Values

In the event that a system has to be replaced, or you have multiple systems at one location, you can configure a system's settings, export the configuration, and import the settings into systems that use the same DIGIOP Server Software version,



Search Window Tools → Search

The Search window enables you to search for and archive recorded video or data clips.

