



DVR Networking Guide



Please read this manual before setting up networking for your system, and always follow instructions for proper use. Please save this manual for future reference.

LEGAL NOTICE

Supercircuits products are designed to meet safety and performance standards with the use of specific Supercircuits authorized accessories. Supercircuits disclaims liability associated with the use of non-Supercircuits authorized accessories.

The recording, transmission, or broadcast of any person's voice without their consent or a court order is strictly prohibited by law.

Supercircuits makes no representations concerning the legality of certain product applications such as the making, transmission, or recording of video and/or audio signals of others without their knowledge and/or consent. We encourage you to check and comply with all applicable local, state, and federal laws and regulations before engaging in any form of surveillance or any transmission of radio frequencies.

Other trademarks and trade names may be used in this document to refer to either the entities claiming the marks and names or their products. Supercircuits, Inc. disclaims any proprietary interest in trademarks and trade names other than its own.

No part of this document may be reproduced or distributed in any form or by any means without the express written permission of Supercircuits, Inc.

© 2010 Supercircuits, Inc. All rights reserved.

11000 N. Mopac Expressway, Building 300, Austin, TX 78759
Sales/Support: 1.800.335.9777 | Fax: 1.866.267.9777



Table of Contents

SECTION 1	DVR Networking	1
1.1	Before you begin	1
SECTION 2	Connecting Your DVR to the LAN.	2
SECTION 3	Remote Viewing Via WAN (Internet)	8
SECTION 4	Troubleshooting Connection Problems	11
4.1	Ping DVR returns “Reply from ...”, packets data good, but cannot connect.	11
4.2	Ping DVR returns “Reply from ...” with packets errors.	12
4.3	Ping DVR command returns “Request timed out”	12





SECTION 1

DVR Networking

Networking your DVR enables it to be accessed from a personal computer (PC) for remote viewing of cameras and retrieval of stored video streams. DVRs can be setup for remote viewing across a private Local Area Network (LAN), and across a Wide Area Network (WAN), such as the internet.

Remote access can be used with the following operating systems:

- Microsoft® Windows® XP, SP3 or later
- Microsoft Vista® (32-bit version only)
- Microsoft Windows 7

Screen captures shown in this document were taken from a Microsoft Windows XP operating system. These captures are provided as examples of what you might see when you enter various network commands within Windows DOS. The results you see should be similar.

This guide includes general procedures for:

- Connecting the DVR to your LAN – enables viewing your DVR across a private network (LAN) using an attached PC
- Remote Viewing via WAN (Internet) – enables capability to view your DVR cameras from a PC via the Internet

1.1 Before you begin

If connecting your DVR to an enterprise network, use the following instructions, but consult with your network administrator for DVR network settings before attaching the DVR to the LAN. Your network administrator should also setup WAN access to the DVR, if needed.

If connecting your DVR to a router, use the following instructions.

NOTE

If you are connecting your DVR directly to a modem (not a router or a modem-router combination), call Supercircuits Support at 1.800.335.9777 for assistance.

SECTION 2

Connecting Your DVR to the LAN

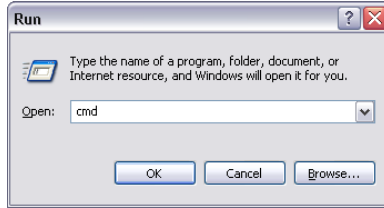
Complete this procedure to use a PC to view video from your DVR across a private network (LAN).

If you encounter a problem and need to contact Supercircuits Support, first complete the chart in Table 1 about your Computer (PC) and DVR network settings, if possible. The Support Team will need this information to provide assistance.

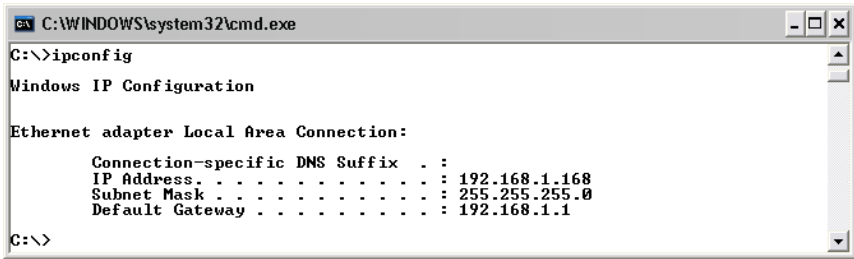
1. If the operating system of your PC is Windows Vista or Windows 7, skip to step 3.
2. Verify that your PC is using Windows XP Service Pack 3:
 - a. Click the **Start** button and then click **My Computer**.
 - b. In the My Computer window, click the System Task **View system information**, or open the Control Panel list and open the **System** controls.



- c. In the General tab of the System Properties window, check the System description. If it does not show that you are using Service Pack 3 or later, update your system through Windows Update or the Microsoft Download Center.
 - d. Close the System Properties and My Computer windows.
3. Determine the IP address, subnet mask, and default gateway of your PC and record it in Table 1. To get this information, do the following at the Windows desktop:
 - a. If the DOS command window is already open, skip to step 3d.
 - b. Open the Windows **Start** menu, then click **Run** to open the Run dialog box.



- c. Type **cmd** in the entry field and then click **OK** to open the DOS command window.
- d. At the command prompt, enter **ipconfig**. The PC will display Ethernet data associated with your Ethernet adapter LAN connection.



Example: Typical use of ipconfig in Windows XP

- e. Enter the IP Address, Subnet Mask, and Default Gateway for your PC's Ethernet adapter into Table 1.

NOTE

The Ethernet adapter data you see by using ipconfig will probably be different from that shown in the example above. If you are using Windows Vista or Windows 7, the IP address is identified as the "IPv4 Address."

Table 1. PC/DVR network settings

	Computer (PC)	DVR
Model	N/A	
IP Address		
Subnet Mask		
Default Gateway		
Port	N/A	



SECTION 2: CONNECTING YOUR DVR TO THE LAN

4. Enter the model of your DVR into Table 1. The model number is shown on the equipment tag on your DVR. It may also appear on a packing slip, invoice, or shipping box.



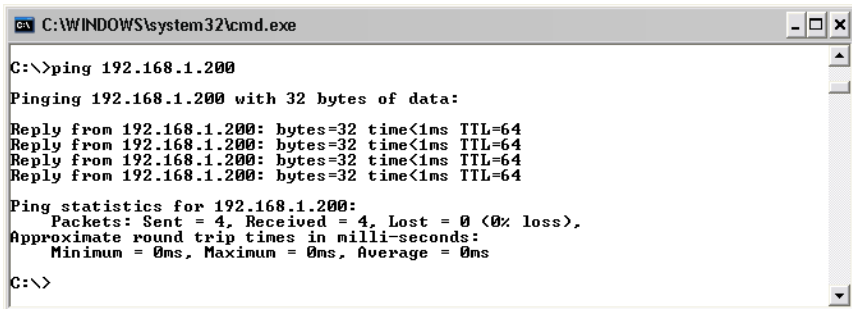
CAUTION

If connecting your DVR to an enterprise network, consult with your network administrator for a DVR IP address, subnet mask, and default gateway. Refer to Table 2 for the recommended port number and the initial username and password settings.

5. Enter the network information about your DVR into Table 1. To get, or set, this information, do the following:
 - a. Use the Quick Start Guide provided with your DVR to perform the initial equipment installation. Do not attach the network (LAN) cable to the DVR.
 - b. Power on the DVR and open the setup menu for “Network” options.
 - c. If DHCP settings are available for your DVR, set them to **off** or **no** instead of **on** or **yes**.
 - d. Next, select the **IP Address** option.
 - e. At your PC, find an IP address on your network that is not in use:
 - i. Write down the EXACT IP address of your PC up to the third/last period. Using the example shown above in the screen capture of ipconfig, this number would be: 192.168.1.
 - ii. After the third period, choose any number between 1 and 255 that is different from the one in your PC’s IP address, 168. As a first try, let’s choose 200, which will form the IP address 192.168.1.200.
 - iii. Next, use the **ping** command in the DOS window to see if that IP address is in use on your network. The format of the ping command is:

ping <IP address>

To test your IP address, enter **ping 192.168.1.200**. Any reply received from the ping indicates that a device on the network is already using this IP address and you can connect to it.



```
C:\WINDOWS\system32\cmd.exe

C:\>ping 192.168.1.200

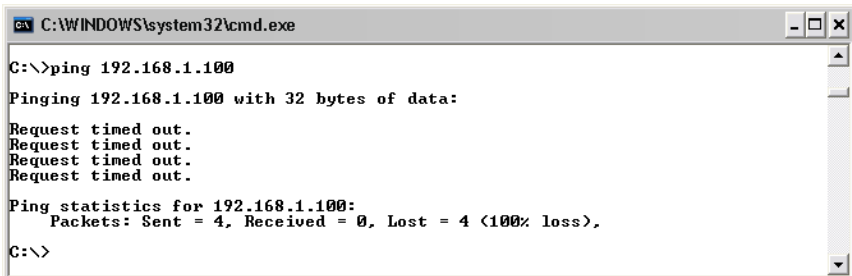
Pinging 192.168.1.200 with 32 bytes of data:

Reply from 192.168.1.200: bytes=32 time<1ms TTL=64
Reply from 192.168.1.200: bytes=32 time<1ms TTL=64
Reply from 192.168.1.200: bytes=32 time<1ms TTL=64
Reply from 192.168.1.200: bytes=32 time<1ms TTL=64

Ping statistics for 192.168.1.200:
    Packets: Sent = 4, Received = 4, Lost = 0 (0% loss),
    Approximate round trip times in milli-seconds:
        Minimum = 0ms, Maximum = 0ms, Average = 0ms

C:\>
```

- iv. Examine the screen capture shown above. The message “**Reply from 192.168.1.200:** ..” indicates that your PC can reach the device with that IP address, and that address is in use.
- v. Since the ping test of the IP address we tried showed the address was in use, try another number between 1 and 255. For example, let’s ping 192.168.1.100. At the DOS prompt, enter: **ping 192.168.1.100**



```
C:\WINDOWS\system32\cmd.exe

C:\>ping 192.168.1.100

Pinging 192.168.1.100 with 32 bytes of data:

Request timed out.
Request timed out.
Request timed out.
Request timed out.

Ping statistics for 192.168.1.100:
    Packets: Sent = 4, Received = 0, Lost = 4 (100% loss),

C:\>
```

- vi. Examine the screen capture shown above. The message “**Request timed out**” indicates that your PC cannot reach the device with that IP address, and that address is probably not in use. Enter this IP address in the DVR network setup display. Also, enter this number into Table 1. If this trial indicated that 192.168.1.100 is in use as 192.168.1.200 is, try other IP address using the steps above until an unused one is found.

NOTE

If your DVR requires three digits in the IP address fields, enter zeros before the other numbers. For instance, 192.168.001.100



SECTION 2: CONNECTING YOUR DVR TO THE LAN

- f. At the DVR network setup display, enter Subnet Mask and Default Gateway fields so that they match those of your PC.
- g. In the DVR network setup, if there is an option to choose either DHCP or LAN, choose **LAN**.
- h. Finally, use the table below to find the DVR's suggested video port number. The suggested port number is associated with the model number of the DVR as shown in Table 2.

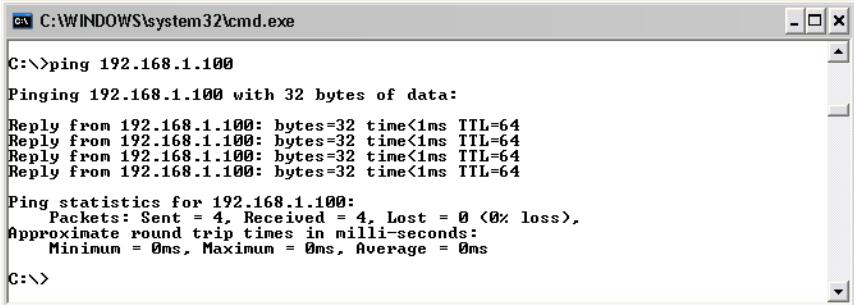
NOTE

The port number you set in the DVR cannot be used by any other device on your local network, or be used by the router for port forwarding. Check the network configuration of your local devices, and the port assignments designated in your router, to ensure that the port is available.

Table 2. DVR login defaults

DVR Model	Video Port	UserID	Password
BLK-DH Series	9350	user assigned	user assigned
BLK-DM Series	9310	user assigned	user assigned
DMR20/21/22/23	8000	admin	12345
DMR27/28/29U	8000	n/a	1111
DMR40/41/42DVD	8000	admin	admin
DMR62DV	9310	user assigned	user assigned
DMR70/71/72	9350	user assigned	user assigned
DVQ19N	80	admin	1234

6. Save your settings and exit the DVR network setup menu.
7. Turn off your DVR, then cable it to the LAN.
8. Wait about ten seconds, and then power on the DVR. If the DVR is connected to a router, power off the router, wait 15 seconds, and then restart the router, if possible.
9. Open the DVR network setup window and verify that all the configuration settings you made earlier are in effect.
10. Return to the PC. Open a DOS command window.
11. At the command prompt, use the ping command to test your PC connection to the DVR and to verify that the DVR is an active device on the LAN. Using the example above with the IP address we chose, enter: **ping 192.168.1.100** (The IP address you choose may be different.)



```
C:\WINDOWS\system32\cmd.exe

C:\>ping 192.168.1.100

Pinging 192.168.1.100 with 32 bytes of data:

Reply from 192.168.1.100: bytes=32 time<1ms TTL=64
Reply from 192.168.1.100: bytes=32 time<1ms TTL=64
Reply from 192.168.1.100: bytes=32 time<1ms TTL=64
Reply from 192.168.1.100: bytes=32 time<1ms TTL=64

Ping statistics for 192.168.1.100:
    Packets: Sent = 4, Received = 4, Lost = 0 (0% loss),
    Approximate round trip times in milli-seconds:
        Minimum = 0ms, Maximum = 0ms, Average = 0ms

C:\>
```

12. Examine the response from the ping command. A **“Reply from ...”** message indicates that the IP address 192.168.1.100, that was previously inactive, is now active on the LAN, suggesting that a LAN connection between your DVR and PC has been established.
13. Finally, load the application software that came with the DVR into your PC. When prompted, enter the DVR IP address, port number (if required) and default password noted above (refer to your DVR user manual). If you can view displays from your DVR, it is now setup for networking capabilities across a LAN. If you can't see displays from your DVR, review these procedures. Call Support at 1.800.335.9777 for assistance.

**SECTION 3****Remote Viewing Via WAN (Internet)**

Remote viewing capabilities allow you to access and control your DVR from anywhere in the world via the Internet. Your DVR must be setup on a LAN before this capability can be enabled, and the LAN must have a high-speed connection to the Internet for efficient data transfer to occur.

This procedure requires that the network router be configured to enabling port forwarding to your DVR. If your DVR is setup on a LAN serviced by a network administrator, that person should configure the network for port forwarding. If you are setting up remote viewing on a home network, do the following.

NOTE

Supercircuits provides complete technical support for viewing your DVR within your LAN. However our support team cannot assure complete technical assistance for products from other manufacturers, such as routers and modems. Refer to your product documentation, or contact your internet service provider for support on setting up port forwarding.

1. Configure your router for port forwarding to the DVR using the network information included in Table 1. For instructions, refer to the user documentation for your router and/or the information and service provided at <http://portforward.com>.

NOTE

If you are setting up a DMR27U, DMR28U, or DMR29U, configure your router to port forward the DVR's Web Port, Port (video port), and Port # +10. For example, if the Web Port is 24 and the (video) Port is 8000, configure your router to forward ports 24, 8000, and 8010 to the local IP address of the DVR.

If you are setting up a BLK-DH Series or DMR7X Series DVR, configure your router to port forward the DVR's assigned Port plus the Port # +4. For example, if the assigned Port is 9350 (default) Port 9354 should also be forwarded. Also forward the Web Port, 80.

2. Determine if your router has a dynamic IP address (one that can change arbitrarily, often used by internet service providers (ISPs) for cable/DSL modems) or static IP address (unchanging). If you are unsure, contact your ISP for this information. If you have a dynamic IP address, go to step 4. If you have a DMR6X DVR or a BLK-DM series DVR and a dynamic IP address, call Support at 1.800.335.9777 for specific instructions.
3. To find the static IP address assigned to your LAN, go to <http://www.whatismyip.com/> from a computer on the same LAN as your DVR. The IP address displayed is the IP address you will use to log in remotely. Keep this in your records. Skip to step 6.

Static IP Address:



4. If you have a dynamic IP address, it is convenient and recommended to use a dynamic name server service, such as <http://www.dyndns.com/> (a free service), to setup a remote connection with a fixed hostname to your LAN. If you use DynDNS, the following steps are helpful:
 - a. On dyndns.com under “Resources”, select **Home DNS Solutions**.
 - b. On the “Home Solutions” page, click the link for **Dynamic DNS**.
 - c. Under “Documentation” select the link **How-To**.
 - d. Follow the instructions to set-up an account. Record the DynDNS Hostname, DynDNS Username and DynDNS Password in the table below.

DynDNS Hostname:
DynDNS Username:
DynDNS Password:

5. After setting up a DynDNS account, the (dynamic) IP address specified in the account Hostname must be updated whenever it changes. Depending on your system configuration, either of two options can be used to automatically update the IP address set in your DynDNS Hostname:
 - If you have a DDNS-supported router (see manufacturers information), do the following to configure your router to automatically update your DynDNS with your dynamic IP address.
 - i. Login to your router (see manufacturer’s instructions).
 - ii. Search for a page, tab, or configuration setting labeled “DDNS”.
 - iii. Enter your **DynDNS Hostname, Password** and **Username**.
 - iv. Click **Save Settings** or **Apply**. Your router should now automatically update your DynDNS with your current IP address.
 - If you have a PC running continuously on the LAN with the DVR, do the following to download and install software that automatically updates your DynDNS account when the IP address of your router changes:
 - i. Go to <http://www.dyndns.com/support/clients> and click the **Download** link.



SECTION 3: REMOTE VIEWING VIA WAN (INTERNET)

- ii. Install the “**Updater**” program. When prompted, make sure you select **Install as Windows Service**.
 - iii. Enter your DynDNS **Username** and **Password**, and select your **Hostname**.
 - iv. Click **Apply**. Your PC should now automatically update your DynDNS Hostname settings with your current IP address.
6. Whether you have a static IP address or set up a DynDNS account for a dynamic IP address, Table 3 shows the remote viewing option for several DVR models. Following are different ways to view your DVR on a PC via the Internet:

- Install and use the remote viewing software on the CD provided with your DVR.

Table 3. DVR viewing software

DVR Model	Software	Built-in Web	Web Based Software
BLK-DH/DM Series	SC Black® Network Viewer	Yes	Downloaded from DVR
BLK-SY Series	Reflection	Yes	N/A
DMR22-3/23-2	IVMS 4000 (2.0)	Yes	N/A
DMR27U/28U/29U	MClient	Yes	http://www.anytimeview.com
DMR40/41/42DVD	Video Viewer	Yes	Downloaded from DVR
DMR62DV	CMS - Network Viewer	Yes	Downloaded from DVR
DMR70/71/72	CMS - Network Viewer	Yes	Downloaded from DVR
DVQ19N	N/A	Yes	N/A

- In the URL field of your Internet browser, enter the IP address of your router with port number of your DVR in the format: **http://<static IP address>** For example, if the static address of your router is 190.180.170.32, enter: **http://190.180.170.32**. Exception: If you are accessing a DVQ19N or if the default Web Port number was changed (from the default = 80), use the URL format: **http://<static IP address>:<Web Port>**
 - Access the DVR using your DynDNS account and hostname.
 - Use the Web Based Software and URL listed in Table 3 for your DVR.
7. Verify that your DVR is enabled for WAN access. Refer to the documentation provided with your DVR.



SECTION 4

Troubleshooting Connection Problems

Three common connection problems occur:

- At your PC, when you ping the DVR IP address, you receive a “**Reply from ...**” response and packet data is good, but cannot connect to the software in the DVR.
- At your PC, when you ping the DVR IP address, you receive a “**Reply from ...**” response and packet data shows errors.
- At your PC, when you ping the DVR IP address, you receive a “**Request timed out**” reply, or “**Reply from ...**” with packet errors.

When ping'ing the DVR, the PC must be setup on the same physical LAN and be configured with the same subnet address (3rd octet of the IP address) as the DVR.

If the troubleshooting suggestions included here do not resolve the problem, please call Supercircuits Support at 800-335-9777 for assistance.

4.1 Ping DVR returns “Reply from ...”, packets data good, but cannot connect

Scenario: When you issue a ping command to the DVR IP address, you receive the message “**Reply from ...**” . But you cannot connect to the DVR with a remote viewer, such as MClient, or a browser based viewer.

To Fix: In this scenario, a good way see if your new DVR IP address is in conflict with another device on the network is to remove the Ethernet patch cable from the back of your DVR and ping the DVR IP address. If the message “**Request timed out**” appears, there probably isn't another PC or device on the network using the same IP address you are using for the DVR. Check the network settings used for the connection to the DVR with your remote viewer, including the port settings, if any. Also, recheck the network and port configuration in the DVR. Re-initialize the DVR by powering it off, and then on again. Retry the ping command. If successful, retry to connect to the DVR with a remote viewer.

If, after disconnecting the Ethernet cable from the DVR, you still receive a “**Reply from ...**” message after sending a ping command, another device on the network is already using that IP address. To resolve this condition, find an unused IP address on your network and configure the DVR with it, ping that address from your PC, and test the connection to the DVR with a remote viewer.



4.2 Ping DVR returns “Reply from ...” with packets errors

Scenario: When you issue a ping command to the DVR IP address, you receive the message “Reply from ...” . But errors are present in the returned packets, or packets are lost.

To Fix: This problem could be due to bad Ethernet cables or bad DVR Network Interface Controller (NIC). Check the Ethernet cable connection on the back of the DVR. If the connections are good, replace the cable and retest the connection.

When you “ping” the DVR, see if the green LED blinks:

- If the LED does not blink, the DVR’s NIC card may be bad.
- If the LED blinks, check the network IP address, gateway, port, and subnet mask configuration of your DVR.

4.3 Ping DVR command returns “Request timed out”

Scenario: When you issue a ping command to the DVR IP address, you receive the message “Request timed out” response.

To Fix: This problem could be due to bad Ethernet cables or bad DVR Network Interface Controller (NIC). Check the Ethernet cable connection on the back of the DVR. If the connections are good, replace the cable and retest the connection.

When you “ping” the DVR, see if the green LED blinks:

- If the LED does not blink, the DVR’s NIC card may be bad.
- If the LED blinks, check the network IP address, gateway, port, and subnet mask configuration of your DVR.

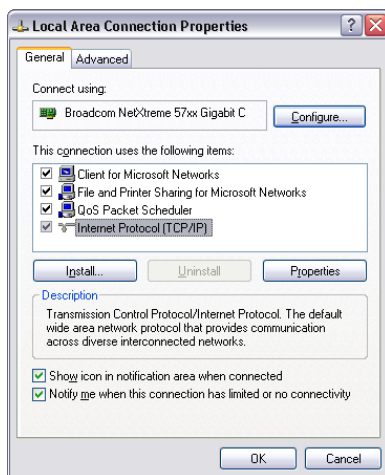
If everything works after reconnecting, re-checking, and re-testing the DVR with the ping command, proceed to step 8. Otherwise, continue with step 1 below to test the DVR using an Ethernet crossover cable.

1. Disconnect the LAN cables from your PC and DVR, and connect the PC LAN port directly to the DVR LAN port with an Ethernet crossover cable. (An Ethernet crossover cable is usually available at a good electronics retailer.) This hardware setup simplifies the network by isolating your DVR and PC from the router and other LAN and WAN (Wide Area Network) devices.

NOTE

Never use a Ethernet crossover cables for final installation or for connecting a router to a modem. Use Ethernet patch cables between the DVR and the router, and between the router and the modem.

2. At your PC, click **Start** and select **Control Panel**.
3. In the Control Panel select **Network Connections**.
4. Right click **Local Area Connections** and select **Properties**.



5. Double click the **Internet Protocol [TCP/IP]** entry.
 - a. Record the current (operational) network settings for your PC in the following table.

○ or	Obtain an IP address automatically.
○	<p>Use the following IP address.</p> <p>IP address: </p> <p>Subnet mask: </p> <p>Default Gateway: </p>

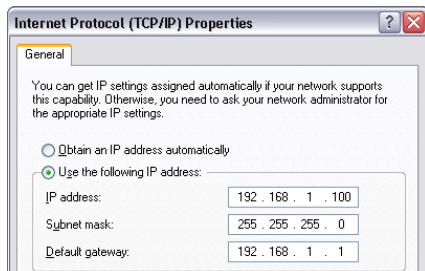


SECTION 4: TROUBLESHOOTING CONNECTION PROBLEMS

- b. Select **Use the following IP address** and enter:

IP Address: **192.168.1.100**
Subnet mask: **255.255.255.0**

Click **OK**.



6. At the DVR, open the network configuration settings window.

- a. Record the current network settings:

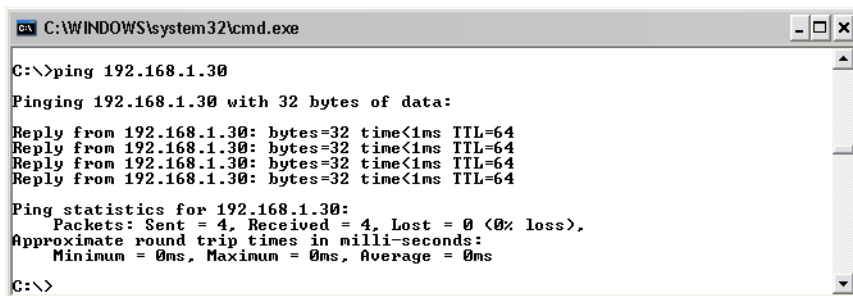
IP address: _____ . _____ . _____ . _____
Subnet mask: _____ . _____ . _____ . _____
Port: _____

- b. Change the DVR network settings to the following:

IP Address: **192.168.1.30**
Subnet mask: **255.255.255.0**
Port: **8000**

NOTE *These settings are for test purposes only.*

7. At the PC, open a DOS window and ping the DVR using the command: **ping 192.168.1.30**
The expected response with the "**Reply from ...**" message is shown in the following window.



```
C:\WINDOWS\system32\cmd.exe

C:\>ping 192.168.1.30

Pinging 192.168.1.30 with 32 bytes of data:

Reply from 192.168.1.30: bytes=32 time<1ms TTL=64
Reply from 192.168.1.30: bytes=32 time<1ms TTL=64
Reply from 192.168.1.30: bytes=32 time<1ms TTL=64
Reply from 192.168.1.30: bytes=32 time<1ms TTL=64

Ping statistics for 192.168.1.30:
    Packets: Sent = 4, Received = 4, Lost = 0 (0% loss),
    Approximate round trip times in milli-seconds:
        Minimum = 0ms, Maximum = 0ms, Average = 0ms

C:\>
```

- a. If you received a **“Reply from ...”** response from the ping command, your PC, crossover cable, and DVR are all working properly. Here, the connectivity problem with the DVR in the LAN may be a result of DVR network settings, router settings, or other devices on the LAN. Do the following:
 - i. Talk with your IP provider and verify that the IP address, subnet mask, and gateway settings used when the DVR was on the LAN are correct.

Reconfigure the DVR network settings for use on the LAN.

Disconnect the crossover cable and reconnect the DVR to the LAN.
 - ii. Check your router’s LAN and power cables and connections and make sure they are working properly.
 - iii. At your PC, open the Internet Protocol (TCP/IP) Properties window and return the network settings to those used before the crossover cable test (recorded in step 5).

Disconnect the crossover cable and reconnect your PC to LAN.
 - iv. At your PC, use the ping command and/or other methods to test the connection to the DVR. If you still cannot connect, call Supercircuits Support at 800-335-9777.
 - b. If the response to the ping command is **“Request timed out”**, recheck the steps above. Verify that the crossover cable is good. If the problem persists, call Supercircuits Support at 800-335-9777.
8. After a successful connection is established between your PC and the DVR on the LAN, install your DVR Remote software and verify that you can view video from the DVR on your PC. See Table 3.