

# Covert Field Surveillance System Quick Setup Guide

This setup guide covers the Covert Field Surveillance System (BADGER1), a self-contained, weatherproof, video monitoring solution ideally suited for rural environments.



**BADGER1 components**

## Step 1. Battery charging

The BADGER1 will operate for about 4 days on a single charge. Before using the BADGER1, charge the battery:

- Set the power switch to OFF.
- Plug the charger into the battery charger connector.
- Plug the charger into a standard electrical outlet.



When the battery is fully charged, the status indicator on the charger will be green. Disconnect the charger promptly. Overcharging will shorten battery life. It may take up to 10 hours to charge the battery.



*If the BADGER1 operates for more than 4 days before recharging, the battery may discharge to a level it cannot recover from. When this happens, the charger's indicator light flashes red or stays red for more than a day, or the charger shuts off when plugged in. If this occurs, contact Supercircuits Sales to purchase a new battery and charger.*

## Step 2. Connect the camera

- Connect the camera video lead (yellow sleeve) to the extension cable BNC connector.
- Connect the camera power connector to the mating connector on the extension cable.



- Plug the extension cable into the connector on the side of the case. Turn the collar clockwise until snug.



## Step 3. Install an SD card

The MDVR14 will accept an SD card with up to 32 GB of storage (2GB card provided). A slot is provided in top of the unit. Insert the card as shown.



## Step 4. Connect a monitor to the DVR

The setup monitor can be used to configure the MDVR14 and view recorded video files.

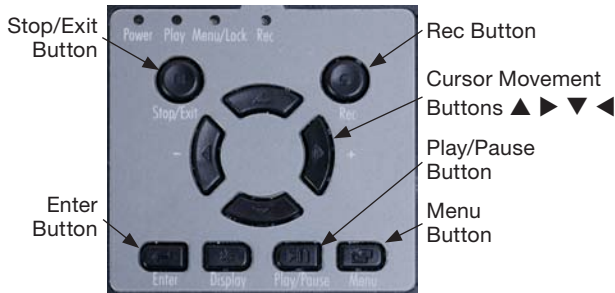
- Open the battery compartment in the setup monitor and install 3 AAA batteries (not included).
- Connect the A/V cable provided to the A/V Out port on the right side of the DVR.



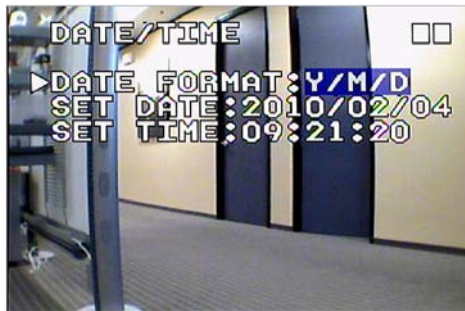
- Connect the yellow RCA connector at the other end of the A/V cable to the setup monitor video input.

### Step 5. Setup the Date/Time

- Set the power switch to ON to power on the system.
- Check the switch on the right side of the DVR. Ensure that it is set to DC.
- While looking into the eyepiece of the setup monitor, press and hold the power button on the side. An image from the camera should appear.
- Press the **Menu** button on the front panel of the DVR to open the MAIN MENU.



- Press the cursor down button, ▼, to highlight **SET DATE/TIME**, then press **Enter**.
- With the DATE FORMAT parameter selected, use the ► or ◀ buttons to select **Y/M/D** (year/month/day), **M/D/Y**, or **D/M/Y**.



- Press ▼ to highlight the first field in **SET DATE**. The fields displayed in the date follow the DATE FORMAT selected. Use ◀ and ► to change the number in this field as necessary. Press the ▼ button to select the next date field, and use the ◀ or ► buttons as before to change this number. Repeat for the third field of the date.
- Press ▼ to select **SET TIME**. The DVR displays time in the format **hour : minute : second**. You can change the numbers in these fields using the same method for setting the date.
- Press **Stop/Exit** to return to the Main Menu.

### Step 6. Setup Motion Record

- At the Main Menu, press ▼ to highlight **SCHEDULE RECORD**, then press **Enter**. Press **Enter** again to open the **MOTION RECORD** screen.



- On the MOTION RECORD screen, press ► to set the **RECORD** option to **ON**.
- Press ▼ to highlight the **SCHEDULE** time. Use the ◀ or ► buttons and the ▼ button as before to set the SCHEDULE start time and end time.
- Similarly, use the ▼ button and the ◀ or ► buttons to set the values you prefer for the **VIDEO SIZE**, **FRAME RATE**, and **QUALITY** parameters.
- Press ▼ again to select the **AUDIO** option, then press ► to set it to **OFF**.
- Press **Stop/Exit** twice to return to the MAIN MENU

### Step 7. Configure Motion Detection Sensitivity

- At the Main Menu, Use ▲ or ▼ to highlight **SET MOTION DETECT**, then press **Enter**.
- Press ▼ to highlight **SET MD SENSITIVITY**, then press **Enter**.



- Pass objects in front of the camera. Observe the levels of MD ENERGY produced in the graph.
- Use the ► and ◀ buttons to set the **MD THRESHOLD** to the level appropriate for triggering recording.
- Press **Stop/Exit** three times to return to the camera display screen.

Your Covert Field Surveillance System is now operational and setup to record when motion is detected.