

# ARX-5 Digital Audio Recording System Quick Setup Guide

This setup guide for the Digital Audio Recording System (ARX-5) includes the basic steps necessary to use your recorder system. The ARX-5 is the receiver unit for an audio transmitter, such as the ATX-4.



For additional information, refer to the following documents included with your system:

- Marantz® Model PDM620 User Manual
- ICOM® Instruction Manual for the IC-R1500 Communications Receiver
- ICOM Instruction Manual for the IC-PCR1500 and IC-PCR2500 Communications Receivers

## Step 1. Charging the ARX-5

To charge the unit, plug the AC power cable into the **AC Input** socket on the left side of the enclosure, then plug the other end of the cable into a grounded 120 VAC power outlet. Allow 6 hours for the internal batteries to become fully charged. The internal batteries can provide up to 5 hours of cordless operation. The unit can be charged while in use and when powered off.



The unit can also be charged and operate from a 12 V DC power source, such as an automobile cigarette lighter socket. The 12 V DC power cable attaches to the **DC Input** socket. Note that the 12 V DC jack and socket are keyed to assure correct polarity.



## Step 2. Connecting the antenna

Two antennas are provided with the ARX-5: a telescopic antenna with a long wire lead, and a flexible duck style antenna for use in constrained areas.

Attach either antenna to the **Ant. Input** BNC connector in the upper right corner of the enclosure deck.



## Step 3. Basic usage

To use your Digital Audio Recording System:

- Set the power switch to ON. The red **Power On** indicator near the switch should light, the tuner display should illuminate, and the digital recorder should provide a display.
- On the recorder, press the **REC** button, then press the **REC PAUSE** to setup the unit in recording pause. When paused, the ring around the REC button will flash red. Audio from the tuner can now be heard through the internal speaker.



- On the tuner, rotate the tuning knob to set the receiving frequency to that of the transmitter you are monitoring.



To set the frequency quickly and more precisely, press the **TS** button in the middle of the tuning knob, rotate the tuner knob to display a tuner frequency step size, then press **TS** again. Rotate the tuner knob to shift frequencies by step size selected. Repeat this method with a small step size to approach the exact transmitter frequency. The bars at the bottom of the screen indicate signal strength.



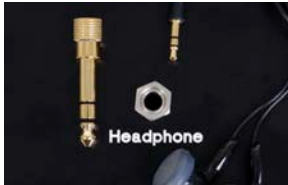
After tuning to the transmitter frequency, adjust the volume (VOL) and squelch (SQL) on the tuner for the best sound quality.

- To begin recording, press the **REC** button on the digital audio recorder. When recording, the ring around the REC button will illuminate a constant red. To end a recording, press the **STOP/CANCEL** button.

#### Step 4. Additional features

##### Headphone jack

To listen to the audio from the tuner or recorder with a headset, plug a headset into the **Headphone** jack in the lower right corner of the enclosure deck. When the Headphone jack is used, the internal speaker is disabled.



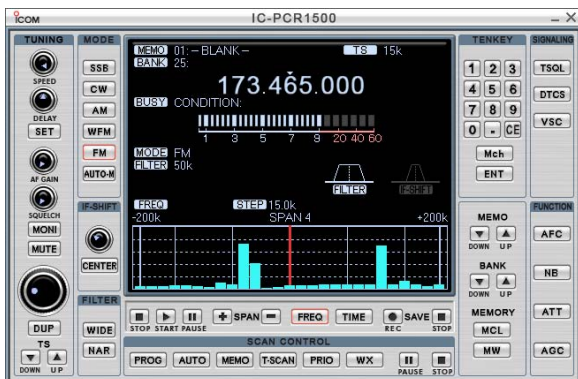
##### Tuner remote control

The tuner can be controlled through a computer running ICOM software included on the CD with the system. To use this feature:

- Connect a USB (A – B) cable between the USB port on the upper left corner of the enclosure deck and your computer.



- Install the IC-PCR1500 driver and application software on your computer. Refer to the ICOM Instruction Manual for the IC-PCR1500 and IC-PCR2500 Communications Receivers for installation procedures.
- Launch the IC-PCR1500\_2500 application software.



**ICOM software Receiver screen**

- Refer to the IC-PCR1500 Instruction Manual for procedures for using this software.

##### Recorder audio tracks

Recordings are saved in MP3 format and numbered sequentially beginning with 1001 (for example, 1001.MP3, 1002.MP3, etc.). These files are saved on a removable SD card installed in the bottom of the recorder. They can also be accessed by a computer through the recorder's USB interface.

To remove the SD card from the recorder:

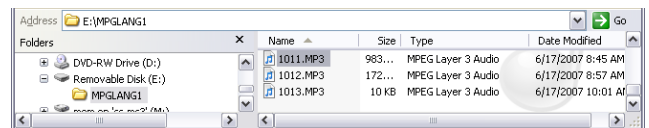
- Power off the ARX-5 system.
- Open the SD card access cover in the bottom of the recorder.



- Push in on the SD card edge, then release to allow the SD card to eject.
- Slide the card out of the slot and insert it into a playback device, such as an MP3 player or computer.

To access recordings directly from the recorder with a computer:

- Stop the recording or playback of any audio tracks.
- Open the USB access cover in the bottom of the recorder.
- Connect a USB A–mini-B cable (not provided) between your computer and the recorder.
- At your computer, start Microsoft® Windows® Explorer and open the drive associated with the USB port connected to the recorder. Recording files are saved in the MPGLANG1 folder. In the example below, the USB port is associated with drive E.



Recording files in the MPGLANG1 folder can be played directly, copied to another location, or deleted.