

**Megapixel IP Dome  
ACM-3401**  
**Megapixel Day&Night IP Dome  
ACM-3411**

Ver. 090723

**Quick Installation Guide**



[www.acti.com](http://www.acti.com)

# 1

## Getting Started

### 1.1 PACKAGE CONTENTS

ACM-3401/3411



Power Adaptor (Option)



Product CD



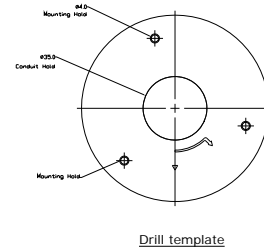
Accessory



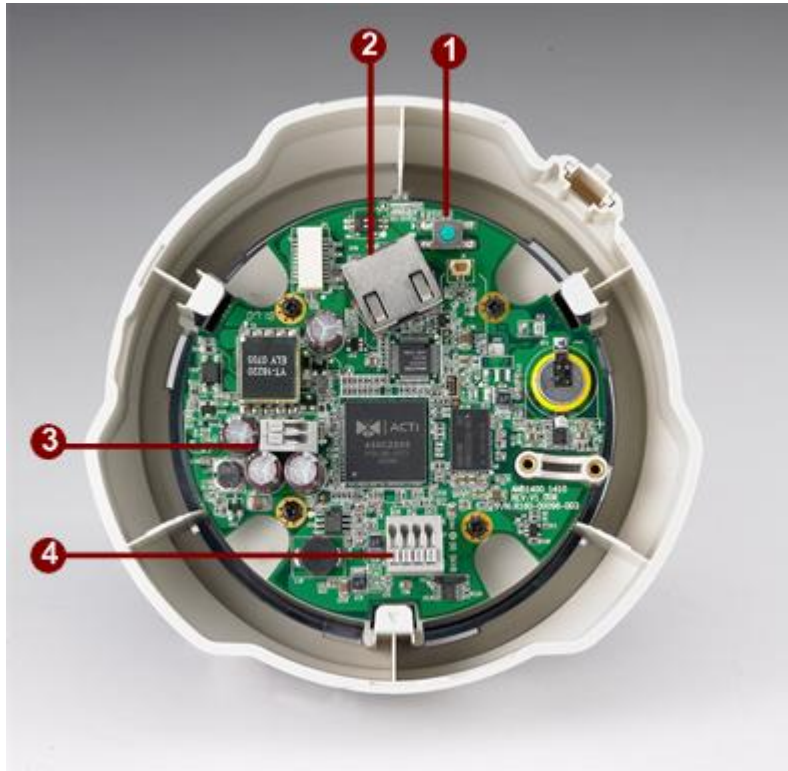
Warranty Card



Drill Template



## 1.2 PHYSICAL DESCRIPTION



### 1. **Reset Button**

**Step 1:** Switch off IP device by disconnecting the power cable

**Step 2:** Press and continue to hold the Reset Button. Reconnect the power cable while continuing to hold the reset button.

**Step 3:** Keep holding the reset button depressed for a while, release the reset button. The unit will start up with factory default settings.

### 2. **Ethernet Port**

The IP device connects to the Ethernet via a standard RJ45 connector. Supporting NWAY, this IP device can auto detect the speed of local network segment (10Base-T/100Base-TX Ethernet).

### 3. **Power Input**

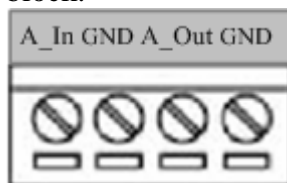
If your power input is DC12V. Please follow the description on the connector to connect to power.



PIN	NAME	DESCRIPTION
1	12V	DC Power Input
2	GND	Ground Pin

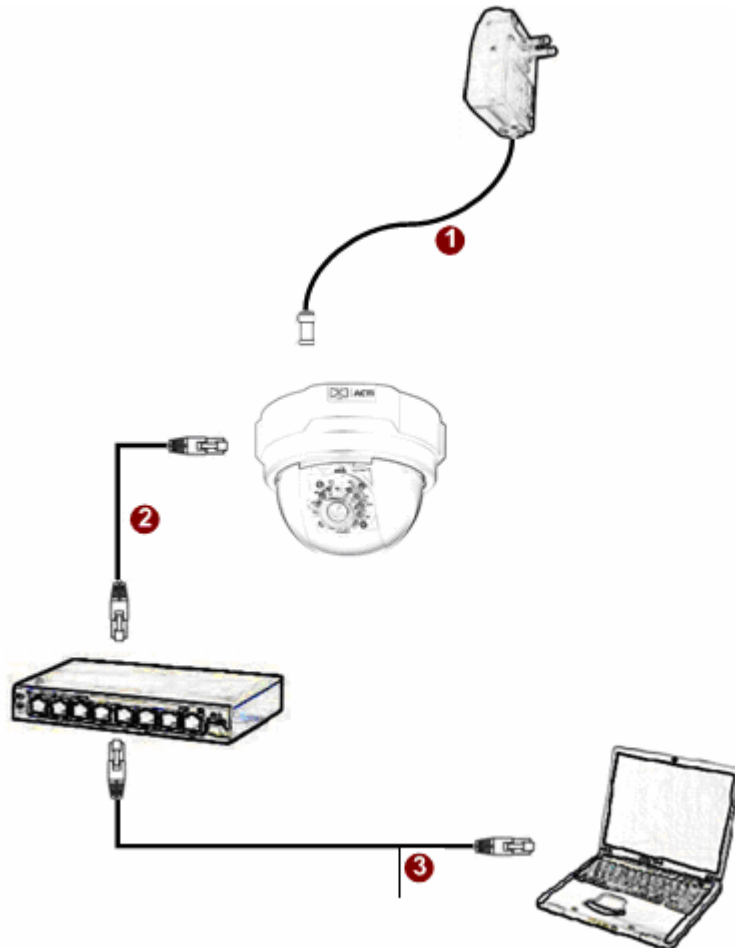
**4. Audio Input / Output**

The IP device supports audio input and output with terminal block.



## 1.3 BASIC CONNECTIONS

Follow the procedures below to connect the IP device to the respective apparatuses.



1. Connect the power adaptor to IP device
2. Connect IP device's ethernet port to an Ethernet (RJ45 connectors). If your IP device has PoE built-in, you can regard it as a PD and connect it directly to a PSE device like PoE switch.
3. Connect a PC to the Ethernet hub (RJ45 connectors)



**NOTE:** You may find a support package for help you getting familiar with PoE. Please visit our web site, and get the support document TS-00040.

# 2

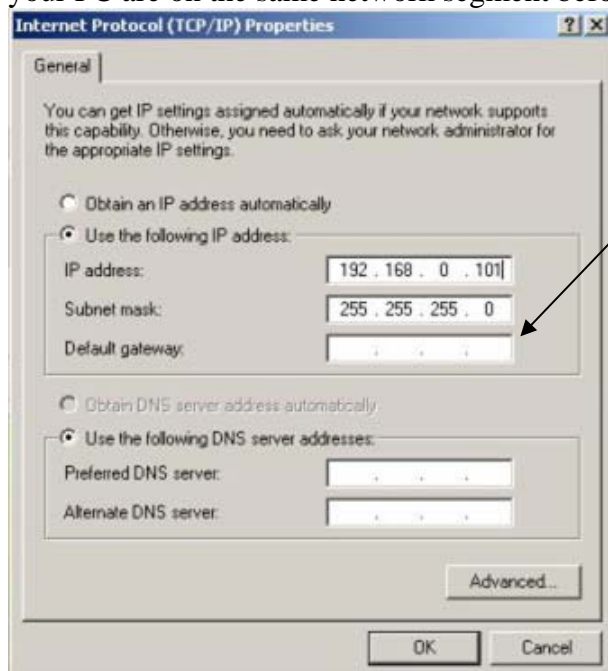
## Quick Tour

This section guides you with a quick tour on this IP device.

### 2.1 Configure this IP Device

#### 2.1.1 Make sure network environment

Default IP of this IP device is 192.168.0.100. Please make sure this IP device and your PC are on the same network segment before running the installation.

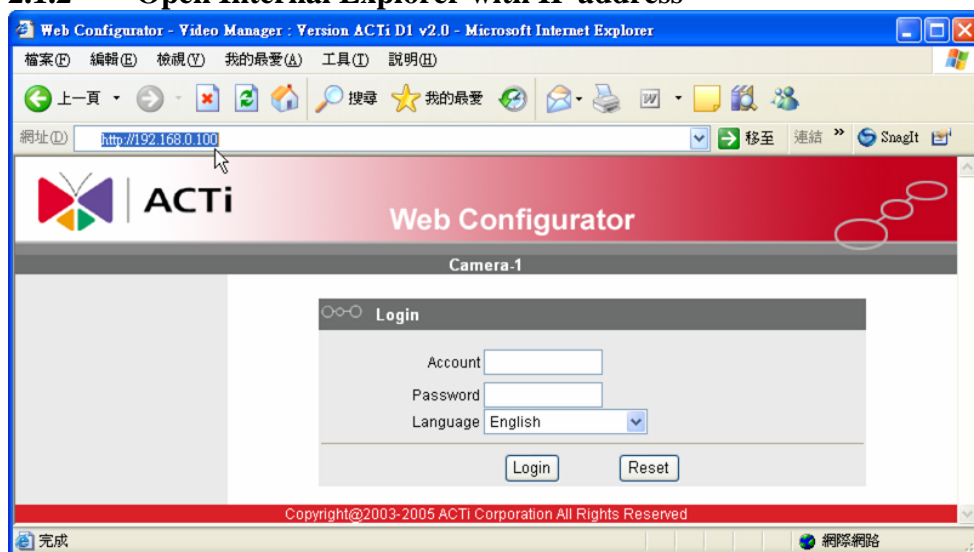


Please set the settings as below.

IP address: 192.168. 0.xxx  
Subnet mask: 255.255.255. 0

(**NOTE:** xxx should be a number from 1 to 254, but 100 is excepted.)

## 2.1.2 Open Internet Explorer with IP address

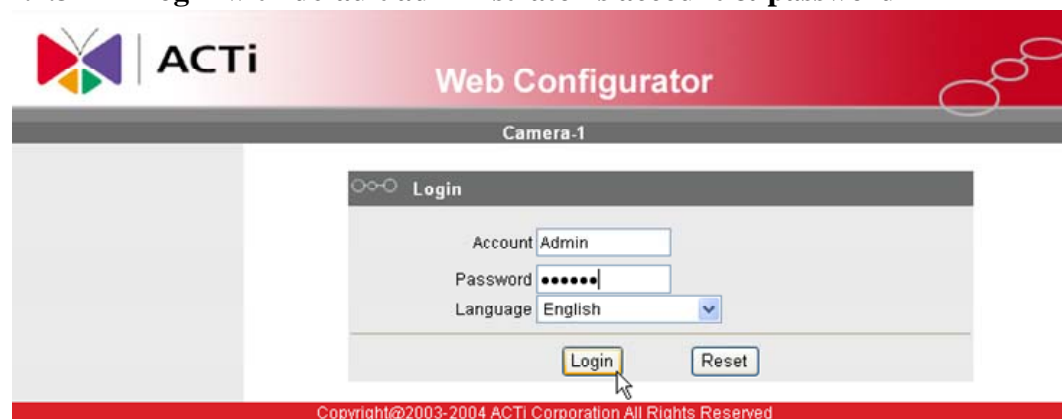



**NOTE:** If your web browser is earlier than IE6, then download IE6 is recommended.



**NOTE:** This IP device default IP address is set to 192.168.0.100

## 2.1.3 Login with default administrator's account & password

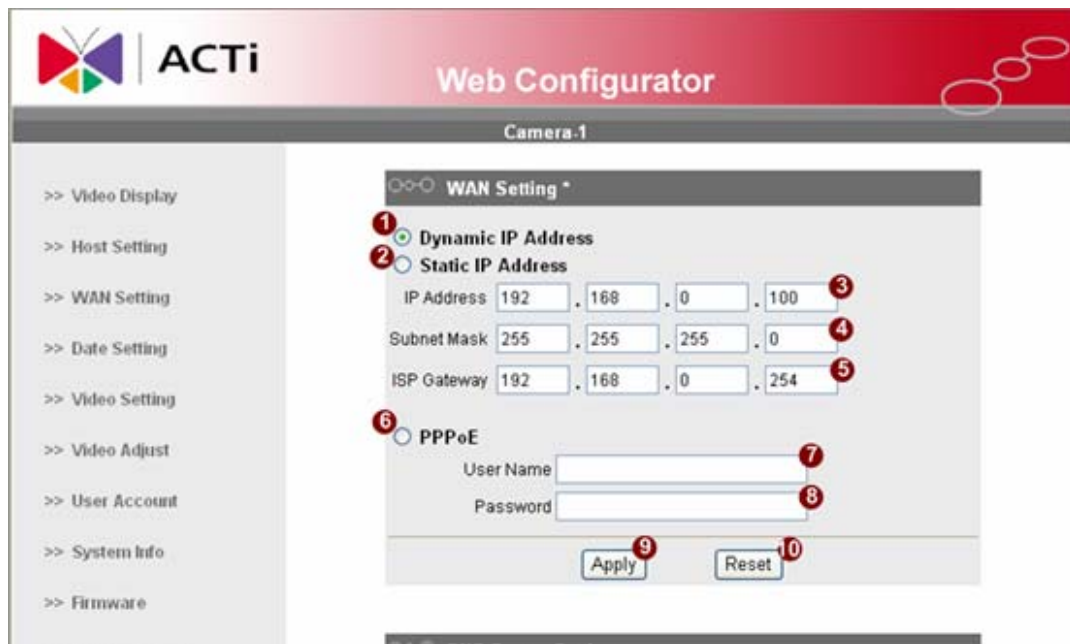


**NOTE:** Default administrator account is set to **Admin**, password is set to **123456**, and click  button.

## 2.1.4 Preview the video





## 2.1.5 Set the new IP address



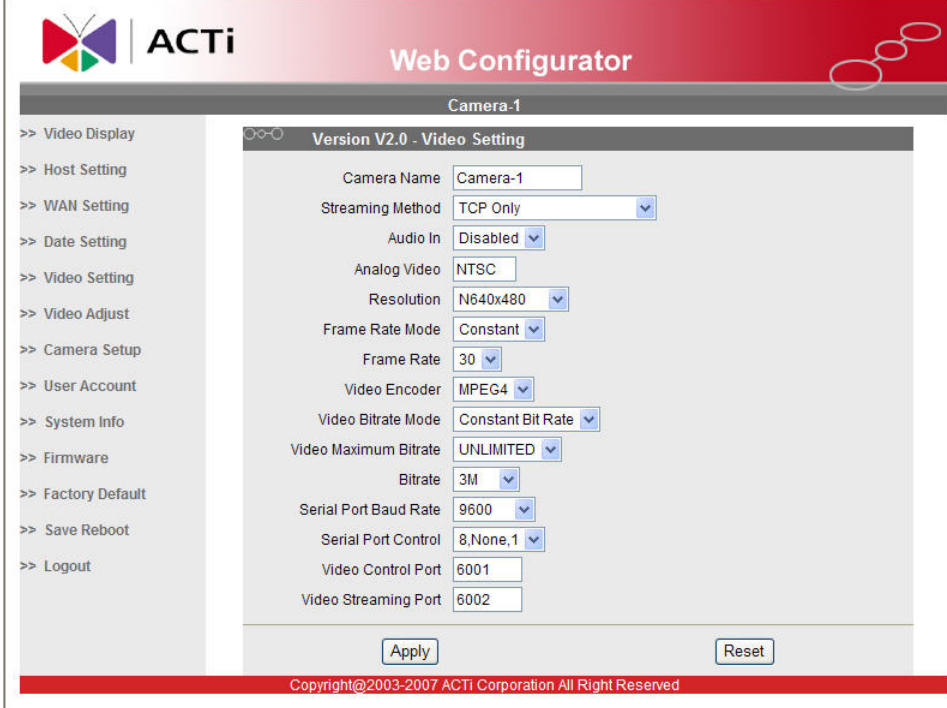
\***IP Address** : The default IP address is 192.168.0.100.

\***Subnet Mask** : The default subnet mask is 255.255.255.0

\***Click**  button

	<b>NOTE:</b> In your Client PC, please make sure the setting of Network Connections Type is set to Auto Negotiation, since this IP device follows MII standard. Otherwise, you might not see the live image.
	<b>IMPORTANT:</b> After the IP address is changed, please record this IP address. There's no way to connect to the IP device if user forgets the new IP address.

### 2.1.6 Check Default Video Setting



The screenshot shows the ACTi Web Configurator interface for Camera-1. The main content area is titled "Version V2.0 - Video Setting" and contains the following settings:

Camera Name	Camera-1
Streaming Method	TCP Only
Audio In	Disabled
Analog Video	NTSC
Resolution	N640x480
Frame Rate Mode	Constant
Frame Rate	30
Video Encoder	MPEG4
Video Bitrate Mode	Constant Bit Rate
Video Maximum Bitrate	UNLIMITED
Bitrate	3M
Serial Port Baud Rate	9600
Serial Port Control	8,None,1
Video Control Port	6001
Video Streaming Port	6002

At the bottom of the settings area, there are "Apply" and "Reset" buttons. The footer of the interface reads "Copyright©2003-2007 ACTI Corporation All Right Reserved".

2.1.7 Click **Save Reboot** to restore all settings and please wait about 30 seconds for system reboot.