



IP Indoor IR Bullet Camera
(with DC 12V / PoE)

ACM-1310 series

Ver. 061101

Quick Installation Guide



www.acti.com

1

Getting Started

1.1 PACKAGE CONTENTS

ACM-1310 series
(DC12V / PoE)



Power Adaptor (Option)



Product CD



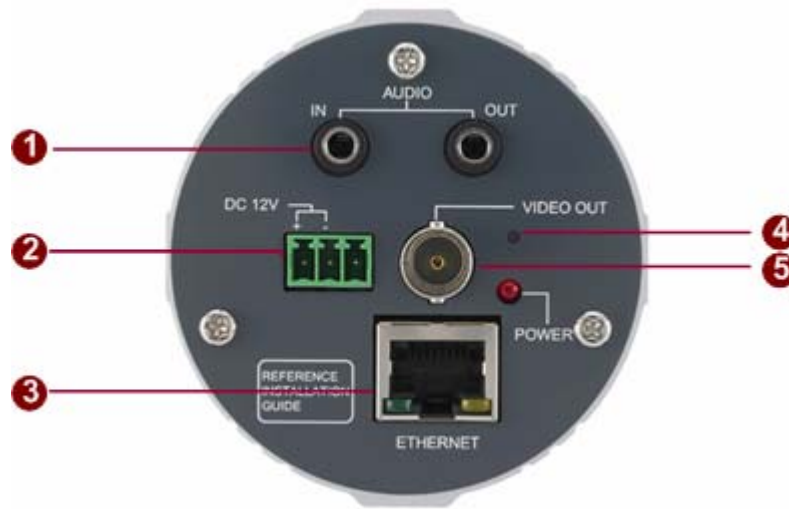
Terminal Block for Power



Warranty Card



1.2 PHYSICAL DESCRIPTION



1. Audio Input / Output

The IP device supports audio input and output with earphone jack

2. Power Input

If your power input is DC12V. Please follow the description on the connector to connect to power.



PIN	NAME	DESCRIPTION
1	12V	DC Power Input
2	GND	Ground Pin

3. Ethernet Port

The IP device connects to the Ethernet via a standard RJ45 connector. Supporting NWAY, this IP device can auto detect the speed of local network segment (10Base-T/100Base-TX Ethernet).

4. Reset Button

Step 1: Switch off IP device by disconnecting the power cable

Step 2: Press and continue to hold the Reset Button. Reconnect the power cable while continuing to hold the reset button.

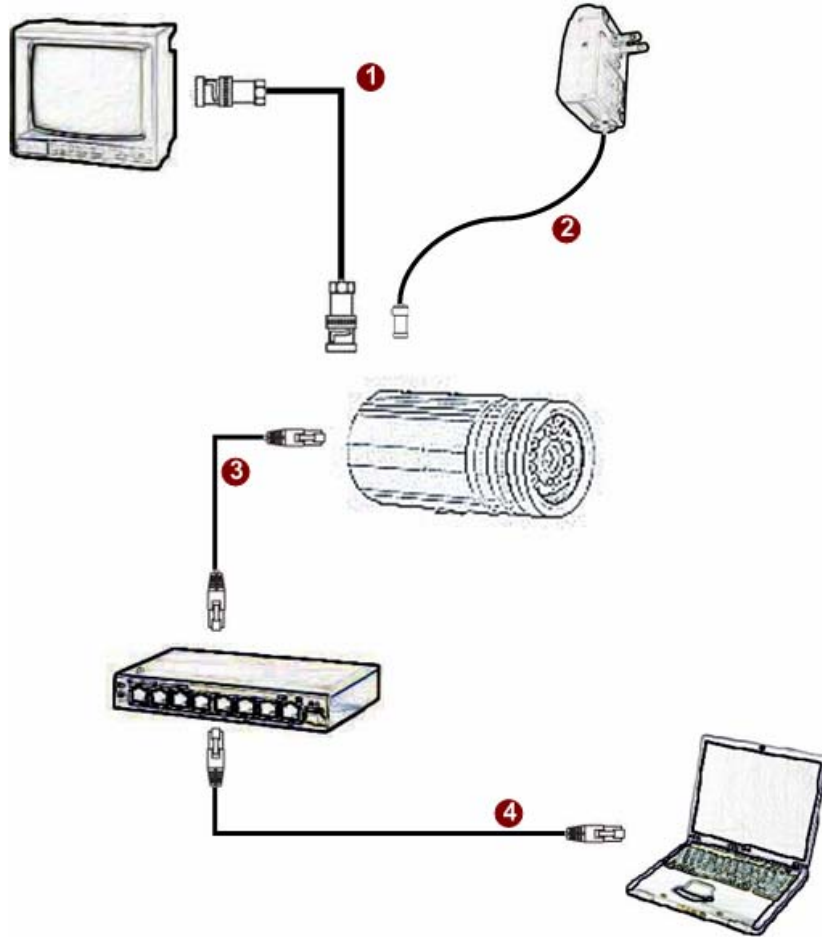
Step 3: Keep holding the reset button depressed around 6 seconds, release the reset button. The unit will start up with factory default settings.

5. **Analog Video Output**

The IP outdoor rugged dome supports one channel analog video output.

1.3 BASIC CONNECTIONS

Follow the procedures below to connect the IP device to the respective apparatuses.



1. Connect an analog monitor to IP device video out (BNC connector).
2. Connect the power adaptor to IP device
3. Connect IP device's ethernet port to an Ethernet (RJ45 connectors). If your IP device has PoE built-in, you can regard it as a PD and connect it directly to a PSE device like PoE switch.
4. Connect a PC to the Ethernet hub (RJ45 connectors)



NOTE: You may find a support package for help you getting familiar with PoE. Please visit our web site, and get the support document TS-00040.

2

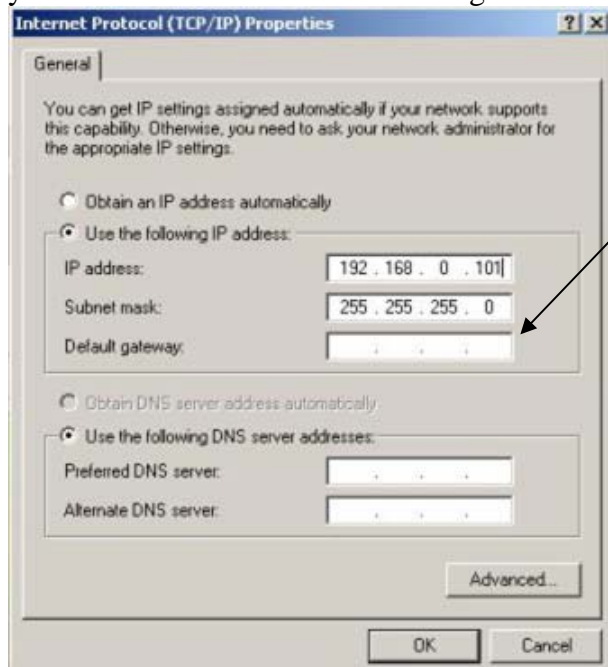
Quick Tour

This section guides you with a quick tour on this IP device.

2.1 Configure this IP Device

2.1.1 Make sure network environment

Default IP of this IP device is 192.168.0.100. Please make sure this IP device and your PC are on the same network segment before running the installation.

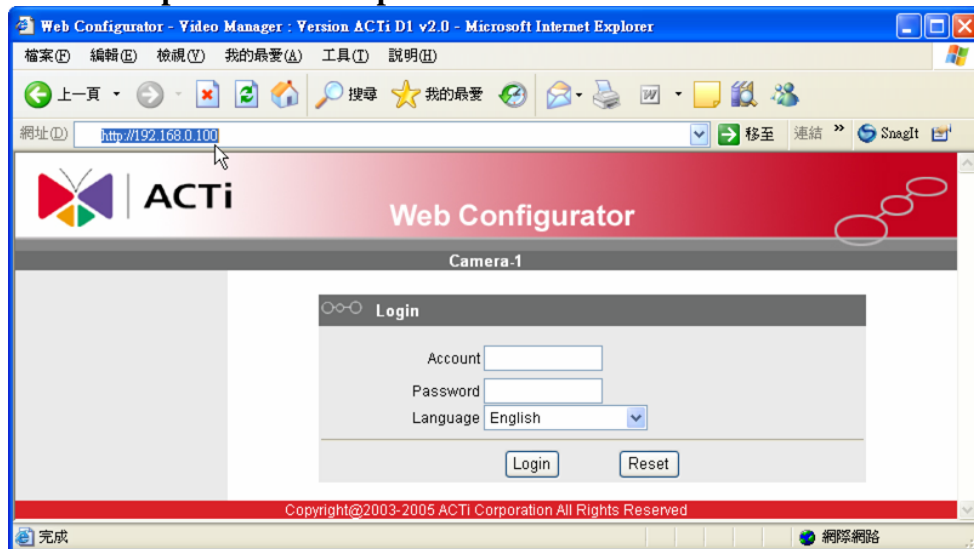


Please set the settings as below.

IP address: 192.168.0.xxx
Subnet mask: 255.255.255.0

(NOTE: xxx should be a number from 1 to 254, but 100 is excepted.)

2.1.2 Open Internal Explorer with IP address



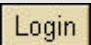
NOTE: If your web browser is earlier than IE6, then download IE6 is recommended.



NOTE: This IP device default IP address is set to 192.168.0.100

2.1.3 Login with default administrator's account & password



NOTE: Default administrator account is set to **Admin**, password is set to **123456**, and click  button.

2.1.4 Preview the video

ACTi Web Configurator

Camera-1

>> **4** Quit

Video Display

1 Mute Audio Out 2

If you can't see the video, click here. 3

Copyright@2003-2006 ACTi Corporation All Rights Reserved

2.1.5 Set the new IP address

ACTi Web Configurator

Camera-1

>> Video Display
>> Host Setting
>> WAN Setting
>> Date Setting
>> Video Setting
>> Video Adjust
>> User Account
>> System Info
>> Firmware

WAN Setting *

1 Dynamic IP Address
2 Static IP Address

IP Address 192 . 168 . 0 . 100 3
Subnet Mask 255 . 255 . 255 . 0 4
ISP Gateway 192 . 168 . 0 . 254 5

6 PPPoE
User Name 7
Password 8



Apply 9 Reset 10

Copyright@2003-2006 ACTi Corporation All Rights Reserved

***IP Address** : The default IP address is 192.168.0.100.



***Subnet Mask** : The default subnet mask is 255.255.255.0

***Click**  button

	NOTE: In your Client PC, please make sure the setting of Network Connections Type is set to Auto Negotiation, since this IP device follows MII standard. Otherwise, you might not see the live image.
	IMPORTANT: After the IP address is changed, please record this IP address. There's no way to connect to the IP device if user forgets the new IP address.

2.1.6 Check Default Video Setting



 **NOTE:** Please make sure the TV Input (NTSC / PAL) is meet your requirement, and click  button.

2.1.7 Click **Save Reboot** to restore all settings and please wait about 30 seconds for system reboot.