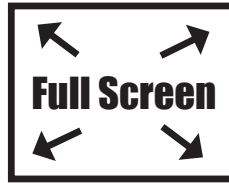
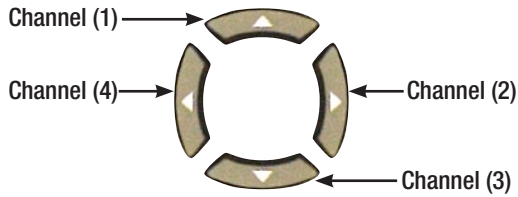
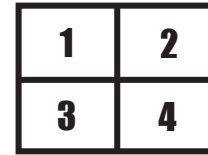


## Changing Views and Selecting Cameras

To change view from 4-camera to 1-camera (full screen), use the arrow keys



Returns to quad (4-Screen) View



Quad Mode



## Manually Recording (Marking Video)

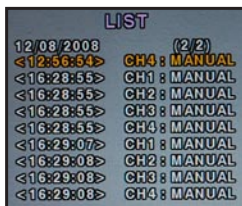
At any time, the **REC** button may be pressed to ensure that an important video event is being captured. Pressing **REC** the (manual record) button will cause all four channels to begin recording immediately and create an event that can be easily located for later playback and video export. Typically a DVR installer will configure the unit to record 24/7, or only when movement is detected on a camera. The manual record function works even if the DVR is already automatically recording. Pressing **REC** again will stop the manual recording, and return the DVR to its normal status. A small indicator is shown on each video screen, identifying the recording status for that camera: M- Motion recording, S- Scheduled recording, R- R manual Recording, C- Continuous recording.

## 4 Steps for Locating, Archiving and Exporting Video

- 1) Press **SEARCH** to search for video. Use arrow keys to navigate and **SEL** to choose options.
- 2) Choose the desired method of searching for video:

### Event Search:

- Choose date (red dates contain events)
- Choose video channel (or quad playback)
- Choose event type:  
A- Alarm input, M- Motion, S- Scheduled recording, R- R manual Recording, C- Continuous recording
- Select event from list, press **SEL** playback will begin.



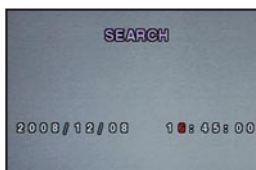
### Timeline Search:

- Choose date (red dates contain video)
- Use arrow keys to select hour, press down and use arrows to select minutes and camera/channel. Press **SEL** to begin playback.
- Parts of the timeline containing video are colored:  
Green = 24/7 Recording | Yellow = Motion  
Red = Sensor | Purple = Manual Recording.



### GoTo (Time):

- Use arrow keys to choose desired date /time, then press **SEL** to start playback.



### Video Playback Control:

Press **←** **▶** **⏪** **⏩** to control playback or press **ESC** to exit playback and back up in menus.

*Cont. on back*



## 4 Steps for Locating, Archiving and Exporting Video *cont.*

### 3) Archive Video - Specifies a segment of video from ONE camera/channel for export

- If you are in quad screen mode, use the arrow keys to select a full screen video channel for archive (if you choose to review video in Quad view, note that only one camera channel may be selected in yellow for archival)

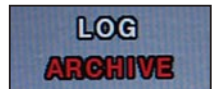


- Press at the beginning of the clip to be archived for export, select VIDEO, press
- Use arrow keys to specify number of SECONDS for clip duration, then press
- Video clip for the selected camera/channel is now archived and ready for export.



### 4) Export Video - Saves an archived video clip to a USB memory stick

- From normal viewing, press the button and choose ARCHIVE



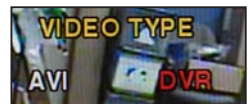
- Use arrow keys to select the DATE of archived video, press



- Select the desired archived video clip from the list, press



- DVR will display a single still image from the archived video clip, if this is the desired clip, press

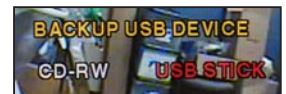


- Choose video format for export, press   
DVR = Includes a special .exe video player on the USB memory that is required to play the secure video format. AVI = "Universal" format other 3rd party video players can use.  
Note: Most users prefer the "DVR" export option since this includes the video player.

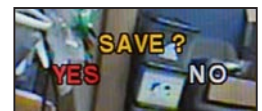
- Insert a USB memory key into front of DVR



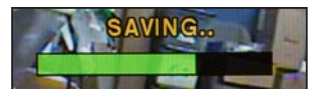
- Use arrow keys and press to choose USB STICK



- DVR will check for USB memory, and ask "SAVE YES / NO" choose YES



- Video will save to USB key, when DVR indicates SAVE SUCCESS, USB key may be removed.



- Press several times to return to normal operation.

